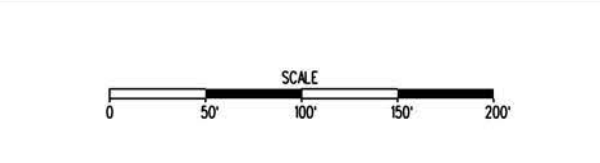




Project Location

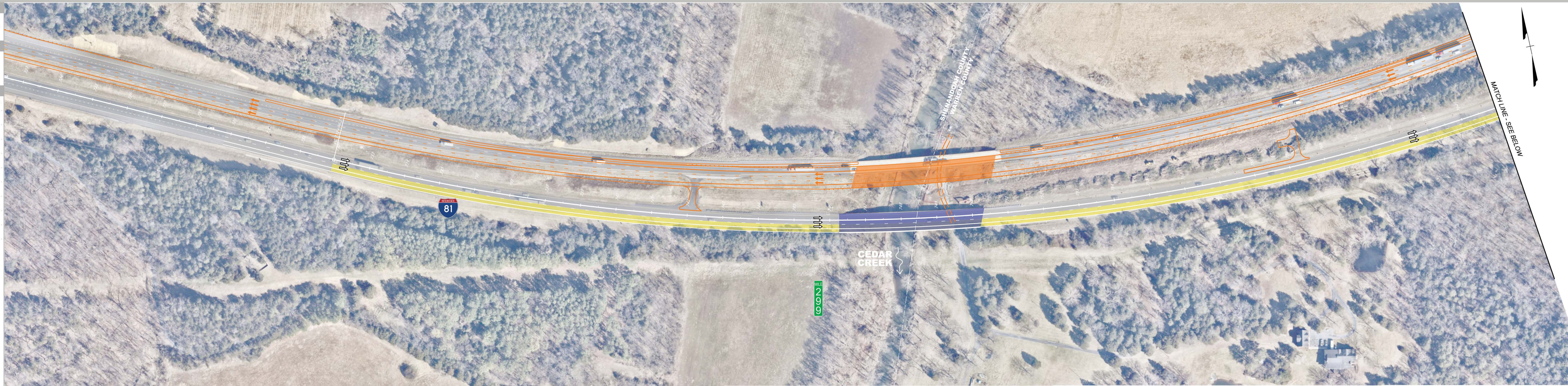


Scale



Legend

- Full Depth Pavement
- Bridge
- Milling and Resurfacing
- Revised I-81 Centerline



Contact Information

Study Manager: Rob Williams, AICP
 robwilliams@robwilliams.com
 803.271.4448
 Project Website: www.improve81.org

These plans are unfinished and unapproved and are not to be used for any type of construction. Preliminary elements are approximate only and subject to change as project energy is finalized. Additional assessments for utility encroachments may be required beyond the proposed right-of-way shown on these plans.
 Imagery Courtesy of Nearmap.com - March 2025



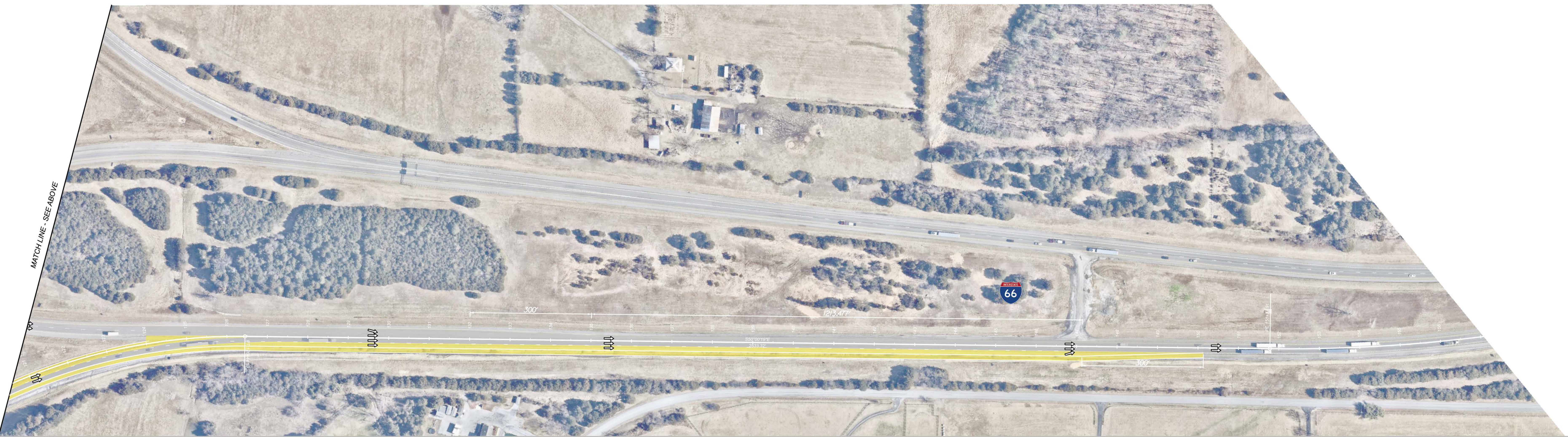
Project Location

Shenandoah County, Virginia
Wayne County, Virginia

Scale

Legend

- Full Depth Pavement
- Bridge
- Milling and Resurfacing
- Rebuild/Resurface I-81 Center Separation Repair Project



Contact Information

Study Manager: Rob Williams, ACP
rwilliams@dot.virginia.gov
 434.977.4928
 Project Website: www.improve81.org

These plans are unfinished and unapproved and are not to be used for any type of construction. Preliminary estimates are approximate only and subject to change as project energy is refined. Additional estimates for utility relocations may be required beyond the proposed right-of-way shown on these plans.
 Mapillary Courtesy of Nearmap.com - March 2025