

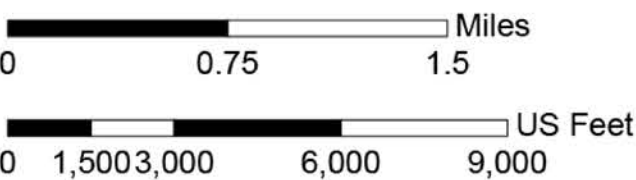
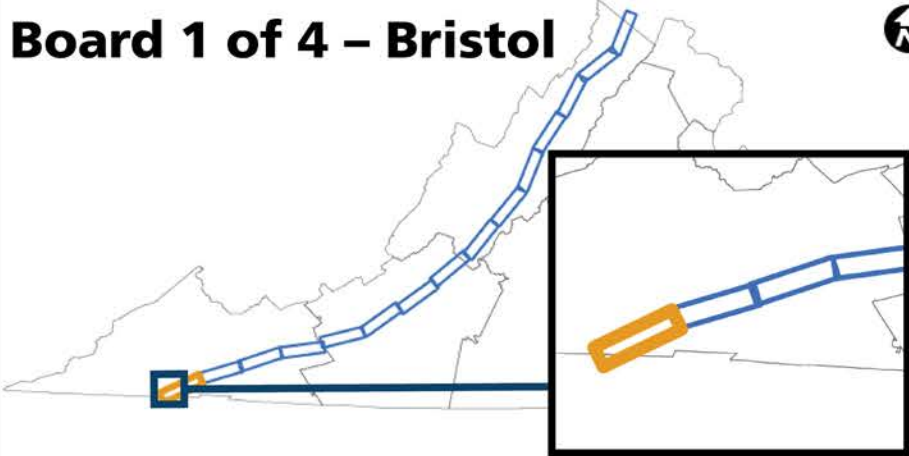


IMPROVE 81

Project Location

Scale

Board 1 of 4 – Bristol



Legend

LEGEND: Existing Conditions

PERFORMANCE MEASURES BY DIRECTION



EXAMPLES OF PUBLIC COMMENTS

- 3 comments indicated safety issues in this segment.
- 4 comments indicated congestion issues in this segment.
- 5 comments indicated truck operations issues in this segment.
- 3 comments indicated other issues in this segment.

PUBLIC COMMENTS

(Summarized by Mile in Each Direction)

- Safety**  
Crashes, speeding, and aggressive driving
- Truck Operations**  
Parking, heavy truck volumes
- Congestion**  
Delays, queues (including ramp), difficulty merging and weaving
- Other**  
Grades, curves, narrow shoulders, pavement marking, signing, and other

# Indicates number of comments identified by the public in Round 1 of engagement

LEGEND: Potential Improvements

- +1 Widening**
- Auxiliary Lane**
- Acceleration/Deceleration Extension**
- Realignment**
- Curve Improvements**
- Truck Climbing Lane**
- Potential Improvement**
- Previously Funded I-81 Corridor Improvement Program Project**

Reference

➔ Mile Marker (MM)

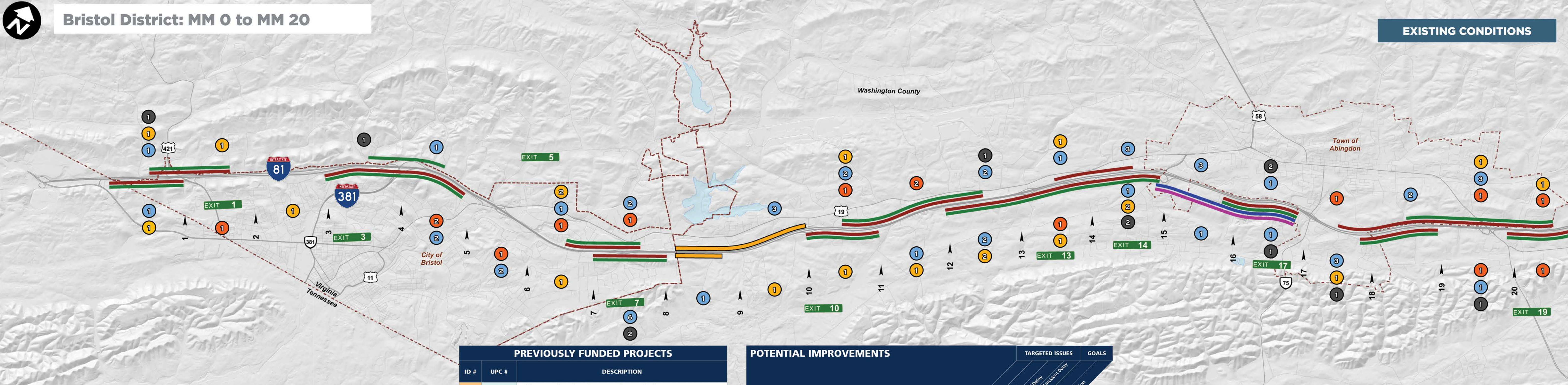


Data Sources: Virginia Department of Transportation 2019, Virginia Geographic Information Network 2019, Airbus, USGS, NGA, NASA, NOAA, CGIAR, GEBCO, NCEAS, NLS, OS, NMA, Geodatastyrelsen, GSA, GSI and the GIS User Community, Maxar



Bristol District: MM 0 to MM 20

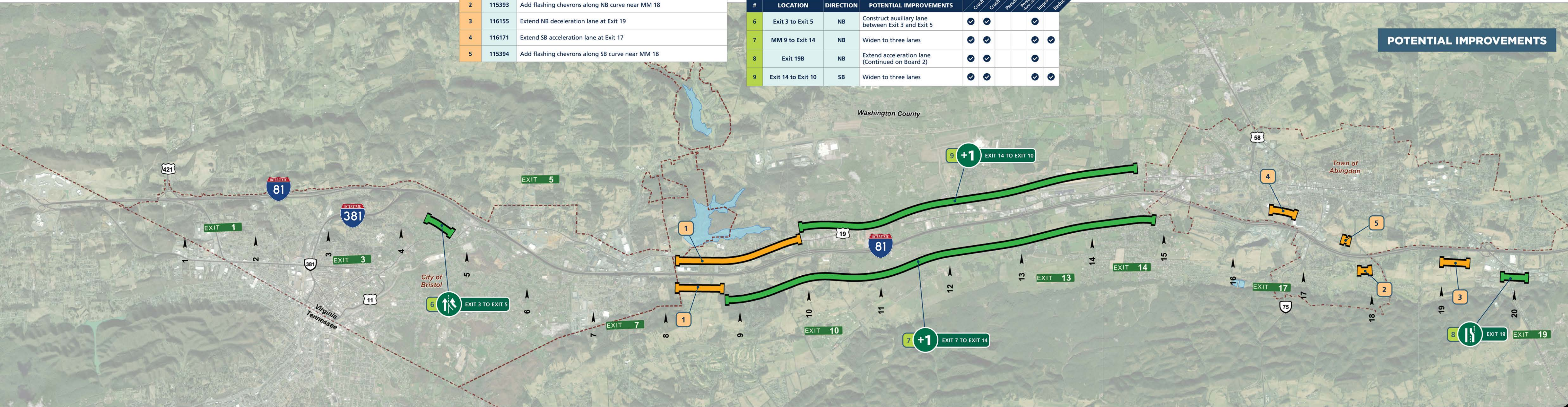
EXISTING CONDITIONS



PREVIOUSLY FUNDED PROJECTS		
ID #	UPC #	DESCRIPTION
1	116170	Widen SB to three lanes between Exit 10 and Exit 7
2	115393	Widen NB to three lanes between Exit 7 and MM 9
3	116155	Extend NB deceleration lane at Exit 19
4	116171	Extend SB acceleration lane at Exit 17
5	115394	Add flashing chevrons along SB curve near MM 18

POTENTIAL IMPROVEMENTS				TARGETED ISSUES				GOALS	
#	LOCATION	DIRECTION	POTENTIAL IMPROVEMENTS	POTENTIAL IMPROVEMENTS					
				Crash Severity	Crash Frequency	Person-Hours of Delay (Person-Hours of Delay = 10)	Person-Hours of Incident Delay	Improve Safety	Reduce Congestion
6	Exit 3 to Exit 5	NB	Construct auxiliary lane between Exit 3 and Exit 5	✓	✓		✓		
7	MM 9 to Exit 14	NB	Widen to three lanes	✓	✓		✓	✓	
8	Exit 19B	NB	Extend acceleration lane (Continued on Board 2)	✓	✓		✓		
9	Exit 14 to Exit 10	SB	Widen to three lanes	✓	✓		✓	✓	

POTENTIAL IMPROVEMENTS







## Project Location

Scale

## Board 2 of 4 – Bristol



### Legend

**LEGEND: Existing Conditions**

### PERFORMANCE MEASURES BY DIRECTION

Category	Relative Length (approximate)
Existing Widening Projects	100%
Crash Severity	85%
Crash Frequency	75%
Person-Hours of Delay	65%
Person-Hours of Incident Delay (lane closure > 1 hr)	55%

## PUBLIC COMMENTS

(Summarized by Mile in Each Direction)

-  **Safety**  
Crashes, speeding, and aggressive driving
-  **Truck Operations**  
Parking, heavy truck volumes
-  **Congestion**  
Delays, queues (including ramps), difficulty merging and weaving
-  **Other**  
Grades, curves, narrow shoulders, pavement marking, signing, and other

# Indicates number of comments identified by the public in Round 1 of engagement

**LEGEND: Potential Improvements**

Legend:

- Widening
- Acceleration/Deceleration Extension
- Curve Improvements
- Auxiliary Lane
- Realignment
- Truck Climbing Lane
- Potential Improvement
- Previously Funded I-81 Corridor Improvement Program Project

## Reference

► Mile Marker (MM)



Data Sources: Virginia Department of Transportation 2019, Virginia Geographic Information Network 2019, Airbus, USGS, NOAA, NASA, NOAA, CGIAR, GEBCO, NCEAS, NLS, OS, NMA, Geodatastyrelsen, GSA, GSI and the GIS User Community, Virginia Geographic

### Bristol District: MM 20 to MM 42

## EXISTING CONDITIONS

## PREVIOUSLY FUNDED PROJECTS


ID #	UPC #	DESCRIPTION
1	116156	Add NB truck climbing lane between Exit 32 and MM 33
2	116159	Extend NB deceleration lane at Exit 39
3	116157	Add truck climbing lane between Exit 39 and MM 41
4	115395	Add static chevrons along SB curve near MM 22
5	115346	Extend SB acceleration lane at Exit 26
6	115345	Extend SB deceleration lane at Exit 26
7	116172	Add SB truck climbing lane between MM 38 and MM 39
8	116173	Add a high friction overlay and animal control fence between MM 38 and MM 39
9	116174	Extend SB deceleration lane at Exit 39
10	116167	Extend SB acceleration lane at Exit 44 (Continues on Board 3)

## POTENTIAL IMPROVEMENTS

#	LOCATION	DIRECTION	POTENTIAL IMPROVEMENTS	<div>Crash Severity</div> <div>Crash Frequency</div> <div>Persons/Hours of Delay (for crashes &gt; 1 hr)</div> <div>Improve Safety</div> <div>Reduce Congestion</div>					
				1	2	3	4	5	6
11	Exit 19B	NB	Extend acceleration lane (Continued from Board 1)	✓	✓			✓	
12	Exit 24	NB	Extend acceleration lane	✓	✓			✓	
13	Exit 29	NB	Extend acceleration lane	✓	✓			✓	
14	South of Exit 35	NB	Improve curve	✓	✓			✓	
15	Exit 35	NB	Extend acceleration lane		✓			✓	
16	Exit 24	SB	Extend acceleration lane					✓	

## POTENTIAL IMPROVEMENTS

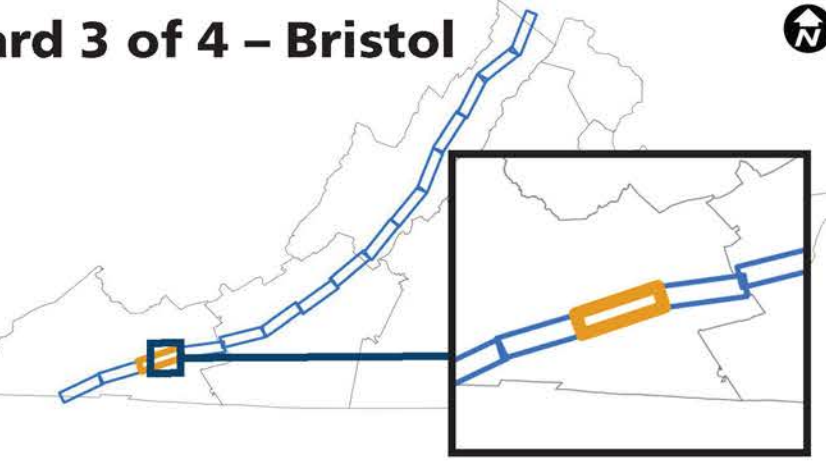




IMPROVE **81**

Project Location

Board 3 of 4 – Bristol



Scale

Miles

0 0.75 1.5

US Feet

0 1,500 3,000 6,000 9,000

Legend

LEGEND: Existing Conditions

PERFORMANCE MEASURES BY DIRECTION

Existing Widening Projects

Crash Severity

Crash Frequency

Person-Hours of Delay

Person-Hours of Incident Delay (lane closure > 1 hr)

EXAMPLES OF PUBLIC COMMENTS

3

3 comments indicated safety issues in this segment.

4

4 comments indicated congestion issues in this segment.

5

5 comments indicated truck operations issues in this segment.

3

3 comments indicated other issues in this segment.

PUBLIC COMMENTS (Summarized by Mile in Each Direction)

Safety

Crashes, speeding, and aggressive driving

Truck Operations

Parking, heavy truck volumes

Congestion

Delays, queues (including ramps), difficulty merging and weaving

Other

Grades, curves, narrow shoulders, pavement marking, signing, and other

#

Indicates number of comments identified by the public in Round 1 of engagement

LEGEND: Potential Improvements

+1 Widening

Auxiliary Lane

Potential Improvement

Acceleration/Deceleration Extension

Realignment


Previously Funded I-81 Corridor Improvement Program Project

Curve Improvements

Truck Climbing Lane

Reference

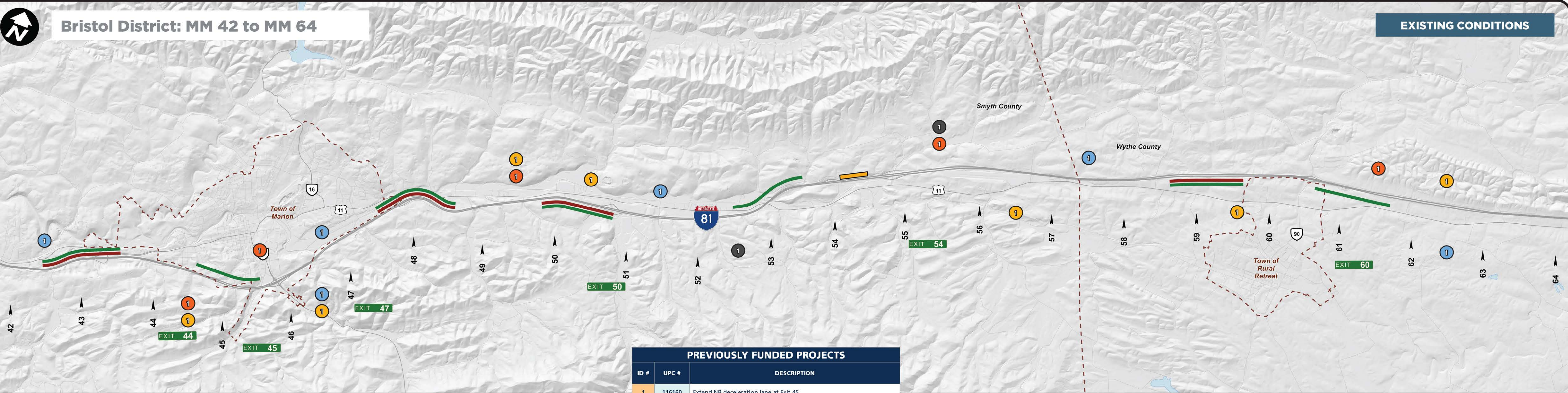
Mile Marker (MM)



Data Sources: Virginia Department of Transportation 2019, Virginia Geographic Information Network 2019, Airbus, USGS, NOAA, CGIAR, GEBCO, NCEAS, NLS, OS, NMA, Geodatastyrelsen, GSA, GSI and the GIS User Community, Virginia Geographic

Bristol District: MM 42 to MM 64


EXISTING CONDITIONS



PREVIOUSLY FUNDED PROJECTS

ID #	UPC #	DESCRIPTION
1	116160	Extend NB deceleration lane at Exit 45
2	116161	Extend NB acceleration lane at Exit 47 (Continued from Board 2)
3	116167	Extend SB acceleration lane at Exit 44
4	116158	Extend SB acceleration lane at Exit 47
5	116169	Add SB auxiliary lane between Exit 54 and Smyth Safety Rest Area

POTENTIAL IMPROVEMENTS





IMPROVE 81

Project Location

Board 4 of 4 – Bristol

Scale

Miles

0 0.75 1.5

US Feet

0 1,500 3,000 6,000 9,000

Legend

LEGEND: Existing Conditions

PERFORMANCE MEASURES BY DIRECTION

Existing Widening Projects

Crash Severity

Crash Frequency

Person-Hours of Delay

Person-Hours of Incident Delay (lane closure > 1 hr)

PUBLIC COMMENTS (Summarized by Mile in Each Direction)

Safety

Crashes, speeding, and aggressive driving

Truck Operations

Parking, heavy truck volumes

Congestion

Delays, queues (including ramps), difficulty merging and weaving

Other

Grades, curves, narrow shoulders, pavement marking, signing, and other

#

Indicates number of comments identified by the public in Round 1 of engagement

EXAMPLES OF PUBLIC COMMENTS

3

3 comments indicated safety issues in this segment.

4

4 comments indicated congestion issues in this segment.

5

5 comments indicated truck operations issues in this segment.

3

3 comments indicated other issues in this segment.

LEGEND: Potential Improvements

+1 Widening

Acceleration/Deceleration Extension

Curve Improvements

Auxiliary Lane

Realignment

Truck Climbing Lane

Potential Improvement

Previously Funded I-81 Corridor Improvement Program Project

Reference

Mile Marker (MM)

Virginia Department of Transportation

Data Sources: Virginia Department of Transportation 2019, Virginia Geographic Information Network 2019, Airbus, USGS, NOAA, CGIAR, GEBCO, NCEAS, NLS, OS, NMA, Geodatastyrelsen, GSA, GSI and the GIS User Community, Virginia Geographic

Bristol District: MM 64 to MM 87

EXISTING CONDITIONS

PREVIOUSLY FUNDED PROJECTS

ID #	UPC #	DESCRIPTION
1	116162	Extend NB deceleration lane at Exit 67
2	115600	Add flashing chevrons along NB curve near MM 68
3	116164	Extend NB I-77 deceleration lane approaching I-81 Exit 72 and reconfigure NB off-ramp at I-77 Exit 41
4	116163	Extend NB deceleration lane at Exit 72
5	116168	Add SB auxiliary lane between Exit 73 and Exit 72
6	116166	Extend SB deceleration lane at Exit 81
7	116165	Extend SB deceleration lane at Exit 84

POTENTIAL IMPROVEMENTS

#	LOCATION	DIRECTION	POTENTIAL IMPROVEMENTS	Crash Severity	Crash Frequency	Person-Hours of Delay	Person-Hours of Incident Delay	Improve Safety	Reduce Congestion
8	MM 67 to MM 69	NB	Improve curves	✓	✓		✓		

POTENTIAL IMPROVEMENTS

Data Sources: Virginia Department of Transportation 2019, Virginia Geographic Information Network 2019, Airbus, USGS, NOAA, CGIAR, GEBCO, NCEAS, NLS, OS, NMA, Geodatastyrelsen, GSA, GSI and the GIS User Community, Virginia Geographic