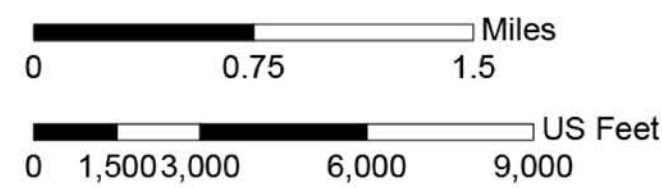
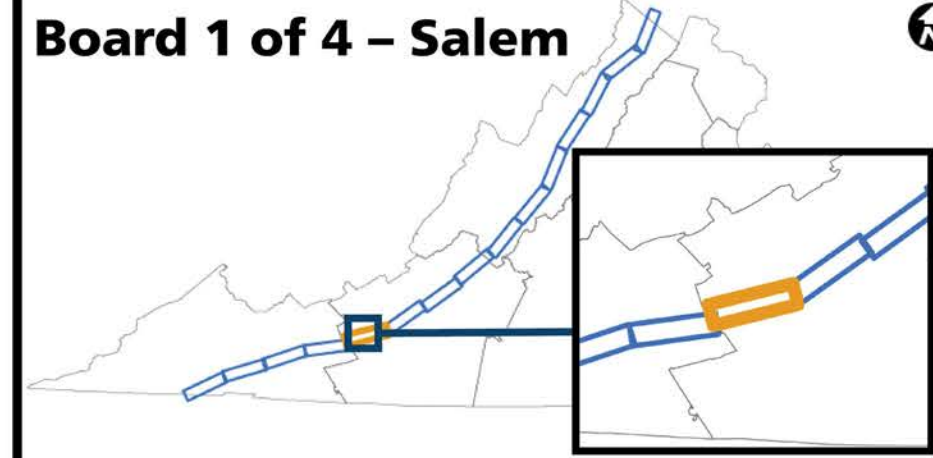




## Project Location

Scale

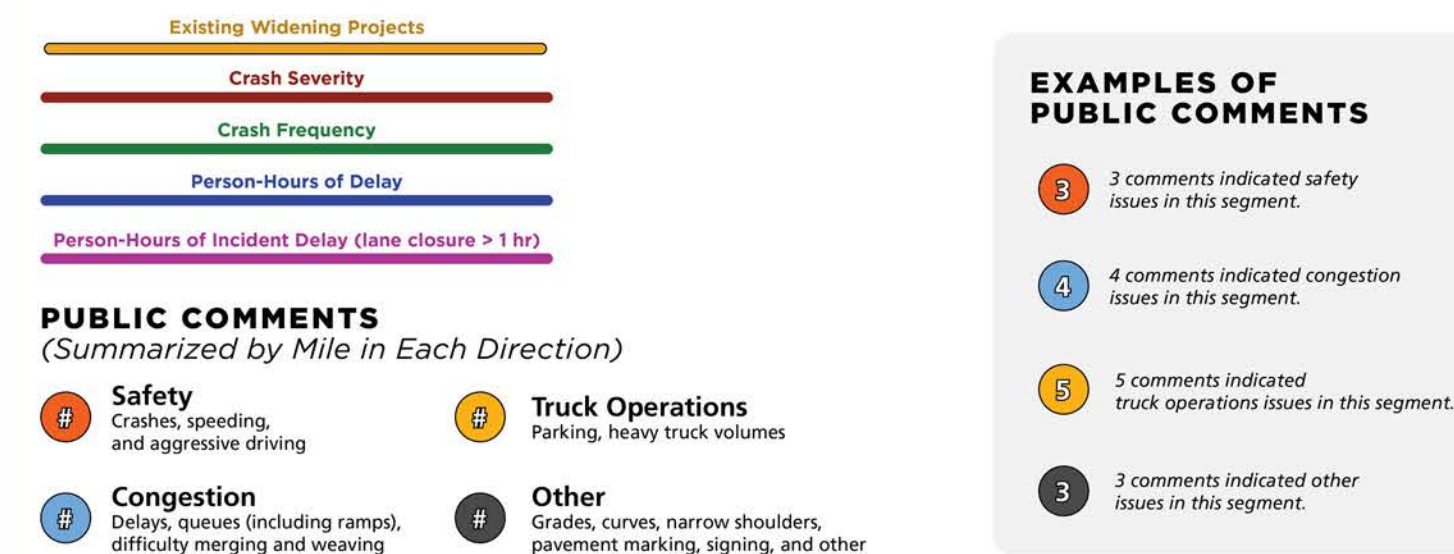
## Board 1 of 4 – Salem



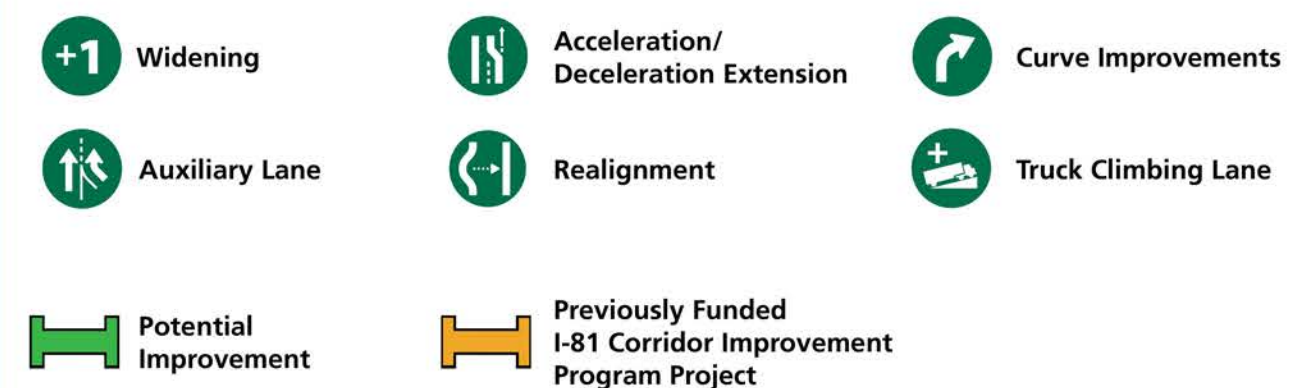
### Legend

**LEGEND: Existing Conditions**

### PERFORMANCE MEASURES BY DIRECTION



**LEGEND: Potential Improvements**

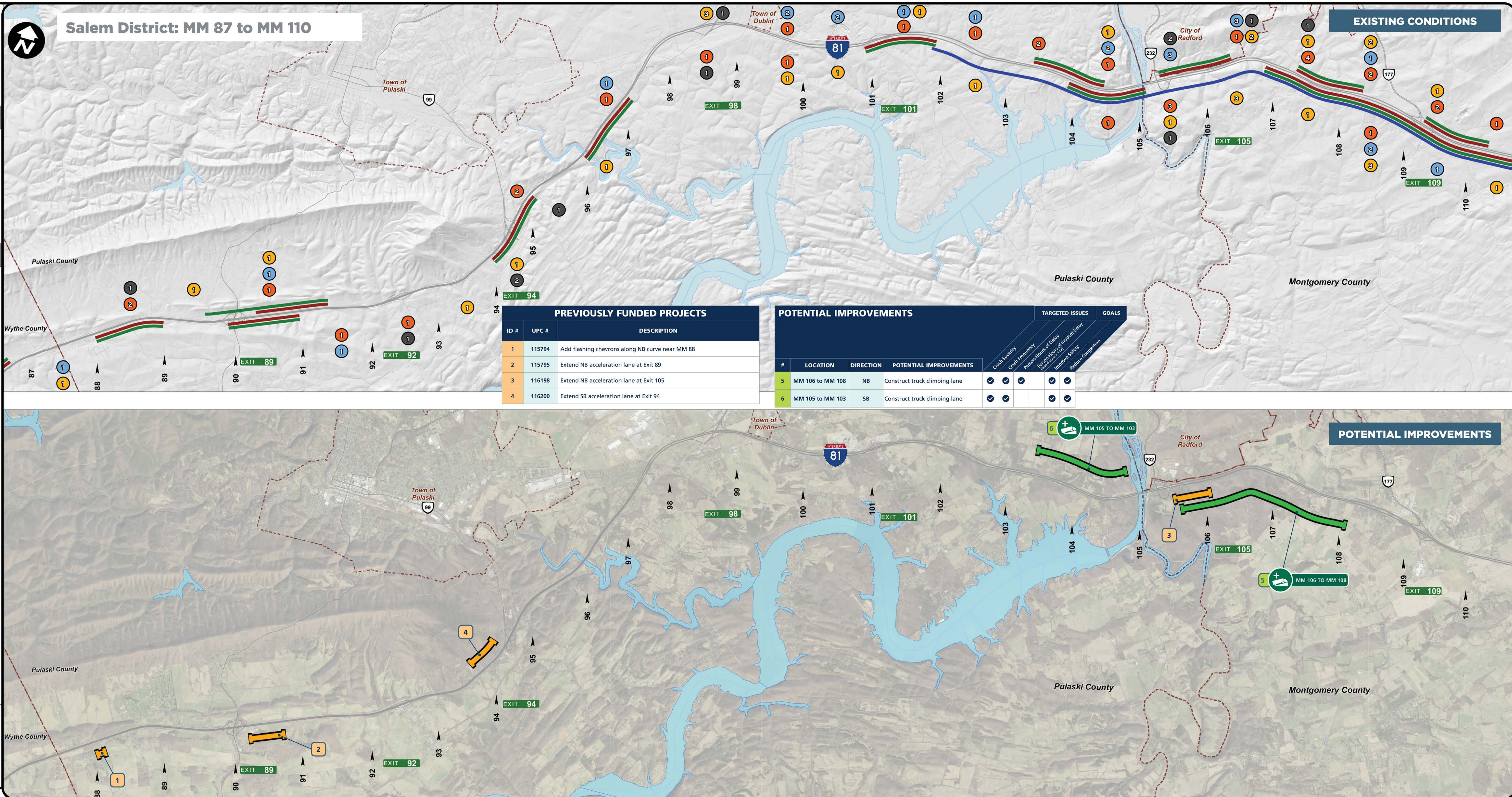


## Reference


► Mile Marker (MM)



Data Sources: Virginia Department of Transportation 2019, Virginia Geographic Information Network 2019, Airbus, USGS, NGA, NASA, NOAA, CGIAR, GEBCO, NCEAS, NLS, OS, NMA, Geodatastyrelsen, GSA, GSI and the GIS User Community, Virginia Geographic



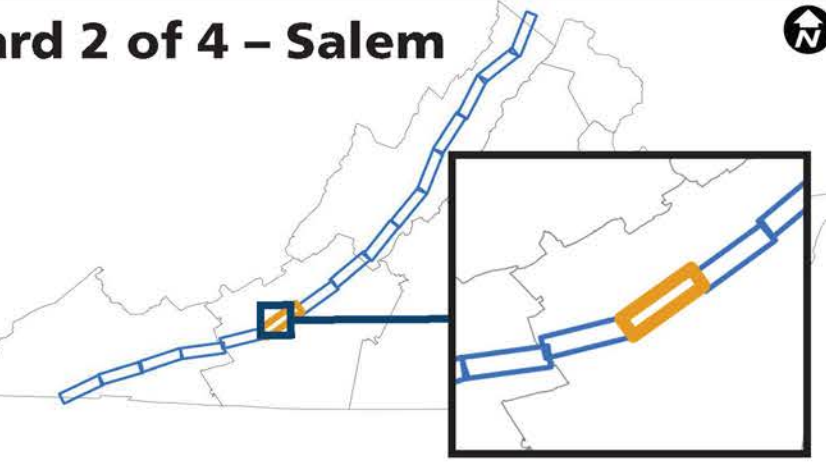




IMPROVE **81**

Project Location

Board 2 of 4 – Salem



Scale

Miles

0 0.75 1.5

US Feet

0 1,500 3,000 6,000 9,000

Legend

LEGEND: Existing Conditions

PERFORMANCE MEASURES BY DIRECTION

Existing Widening Projects

Crash Severity

Crash Frequency

Person-Hours of Delay

Person-Hours of Incident Delay (lane closure > 1 hr)

EXAMPLES OF PUBLIC COMMENTS

3

3 comments indicated safety issues in this segment.

4

4 comments indicated congestion issues in this segment.

5

5 comments indicated truck operations issues in this segment.

3

3 comments indicated other issues in this segment.

PUBLIC COMMENTS (Summarized by Mile in Each Direction)

Safety

Crashes, speeding, and aggressive driving

Truck Operations

Parking, heavy truck volumes

Congestion

Delays, queues (including ramps), difficulty merging and weaving

Other

Grades, curves (including ramps), pavement marking, signing, and other

#

Indicates number of comments identified by the public in Round 1 of engagement

LEGEND: Potential Improvements

+1 Widening

Auxiliary Lane

Potential Improvement

Acceleration/Deceleration Extension

Realignment

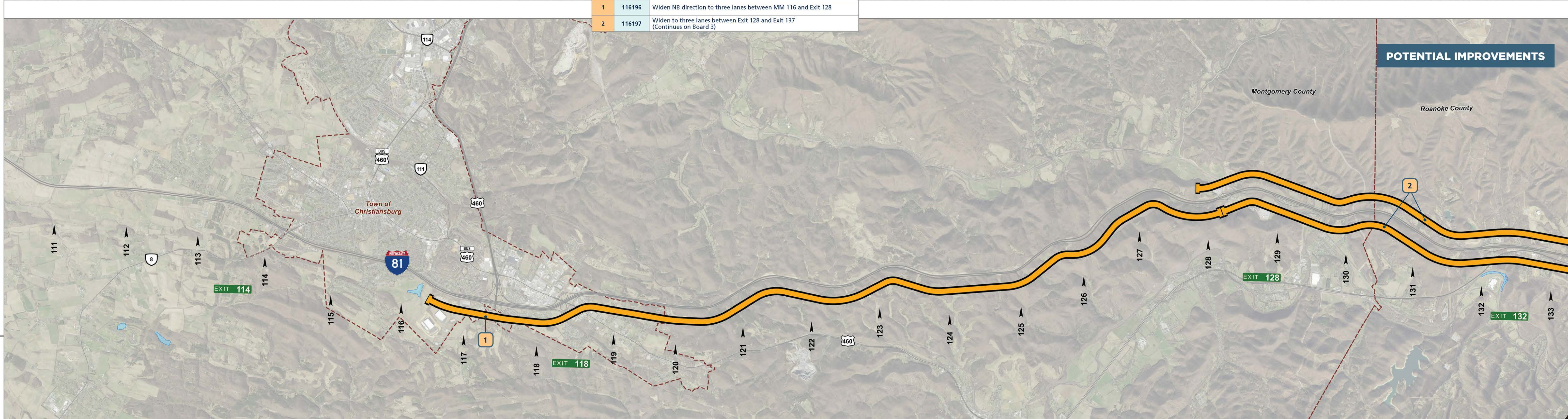
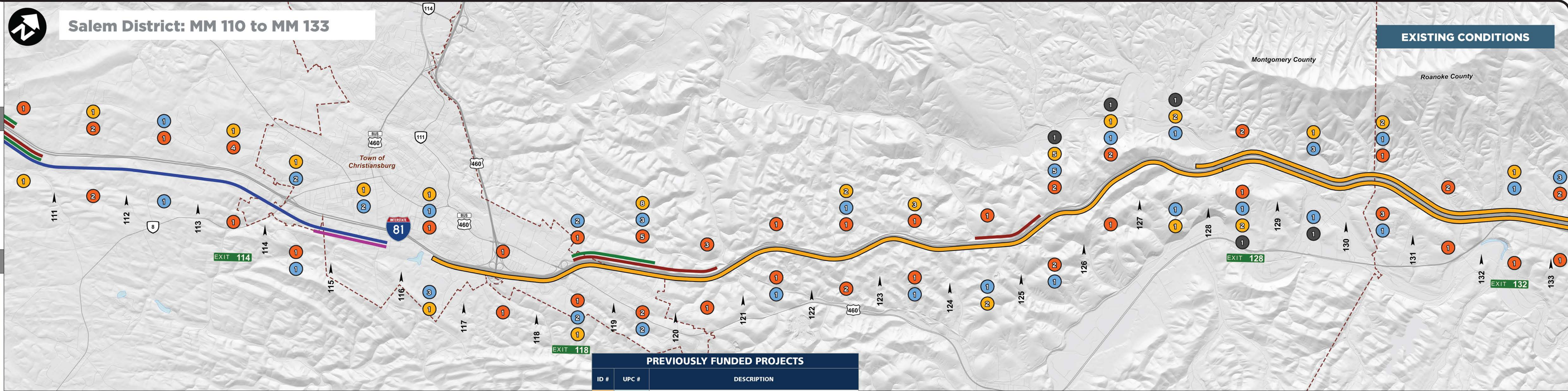
Previously Funded I-81 Corridor Improvement Program Project

Curve Improvements

Truck Climbing Lane


Reference

Mile Marker (MM)



ID #	UPC #	DESCRIPTION
1	116196	Widen NB direction to three lanes between MM 116 and Exit 128
2	116197	Widen to three lanes between Exit 128 and Exit 137 (Continues on Board 3)

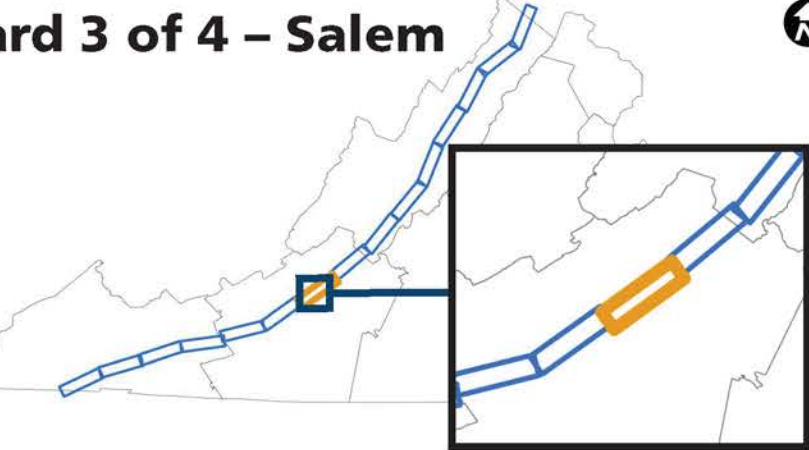




# IMPROVE 81

### Project Location

Board 3 of 4 – Salem



### Scale

Miles: 0, 0.75, 1.5  
US Feet: 0, 1,500, 3,000, 6,000, 9,000

### Legend

#### LEGEND: Existing Conditions

**PERFORMANCE MEASURES BY DIRECTION**

- Existing Widening Projects
- Crash Severity
- Crash Frequency
- Person-Hours of Delay
- Person-Hours of Incident Delay (lane closure > 1 hr)

**PUBLIC COMMENTS**  
(Summarized by Mile in Each Direction)

- Safety**  
Crashes, speeding, and aggressive driving
- Truck Operations**  
Parking, heavy truck volumes
- Congestion**  
Delays, queues (including ramps), difficulty merging and weaving
- Other**  
Grades, curves, narrow shoulders, pavement marking, signing, and other

# Indicates number of comments identified by the public in Round 1 of engagement

**EXAMPLES OF PUBLIC COMMENTS**

- 3 comments indicated safety issues in this segment.
- 4 comments indicated congestion issues in this segment.
- 5 comments indicated truck operations issues in this segment.
- 3 comments indicated other issues in this segment.



PREVIOUSLY FUNDED PROJECTS		
ID #	UPC #	DESCRIPTION
1	116197	Widen to three lanes between Exit 128 and Exit 137 (Continued from Board 2)
2	116203	Widen to three lanes between Exit 137 and Exit 141
3	116201	Widen to three lanes between Exit 143 and Exit 150

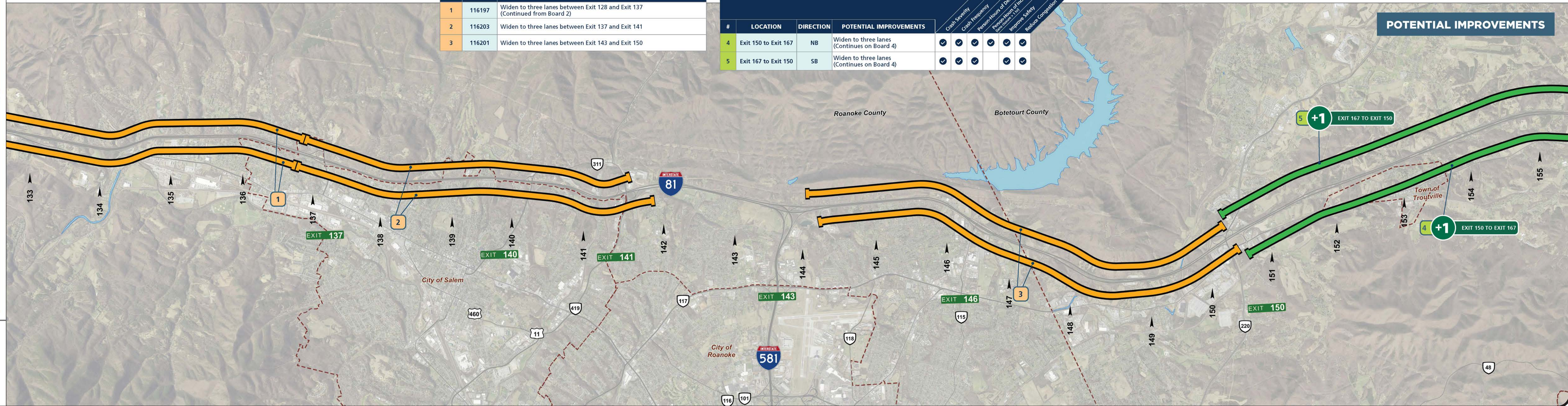
POTENTIAL IMPROVEMENTS				TARGETED ISSUES				GOALS	
#	LOCATION	DIRECTION	POTENTIAL IMPROVEMENTS						
				Crash Severity	Crash Frequency	Person-Hours of Delay	Person-Hours of Incident Delay	Improve Safety	Reduce Congestion
4	Exit 150 to Exit 167	NB	Widen to three lanes (Continues on Board 4)	✓	✓	✓	✓	✓	
5	Exit 167 to Exit 150	SB	Widen to three lanes (Continues on Board 4)	✓	✓	✓	✓	✓	

### LEGEND: Potential Improvements

- +1 Widening
- Auxiliary Lane
- Potential Improvement
- Acceleration/Deceleration Extension
- Realignment
- Previously Funded I-81 Corridor Improvement Program Project
- Curve Improvements
- Truck Climbing Lane

**Reference**

► Mile Marker (MM)



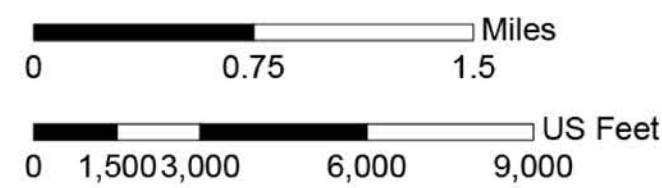
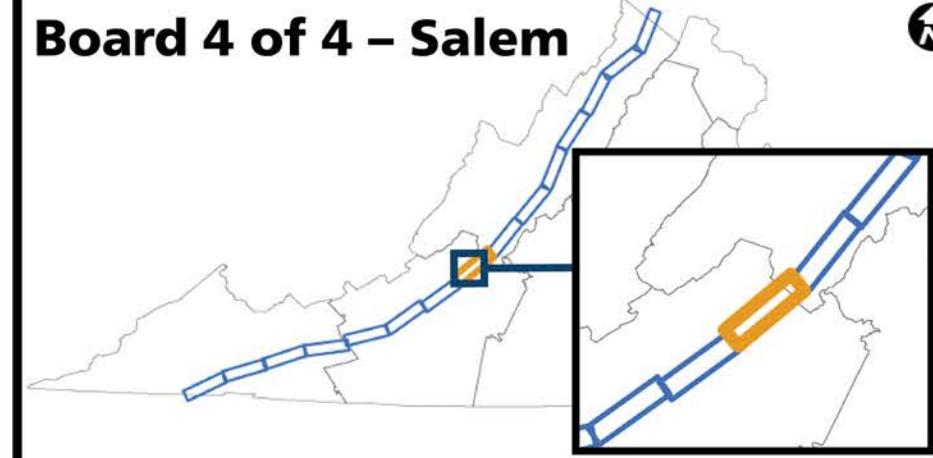




## Project Location

Scale

## Board 4 of 4 – Salem



### Legend

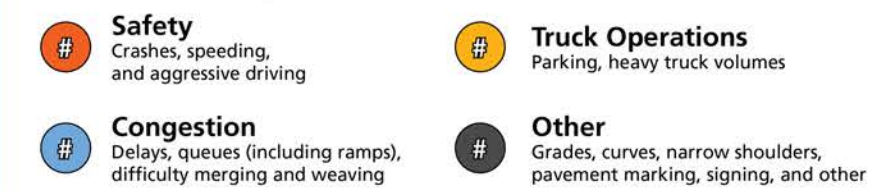
**LEGEND: Existing Conditions**

### PERFORMANCE MEASURES BY DIRECTION WITHIN THE TOP 25% ON THE I-81 CORRIDOR



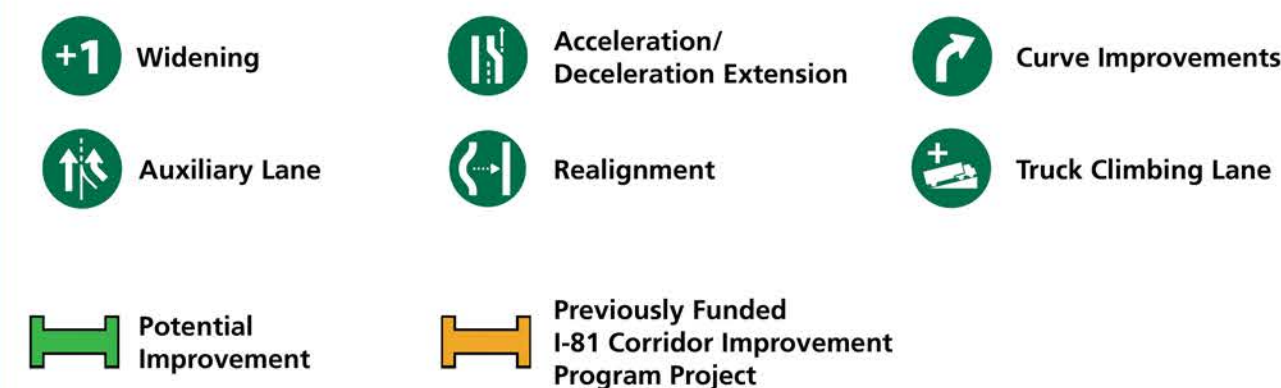
## PUBLIC COMMENTS

**PUBLIC COMMENTS**  
(Summarized by Mile in Each Direction)



# Indicates number of comments identified by the public in Round 1 of engagement

**LEGEND: Potential Improvements**

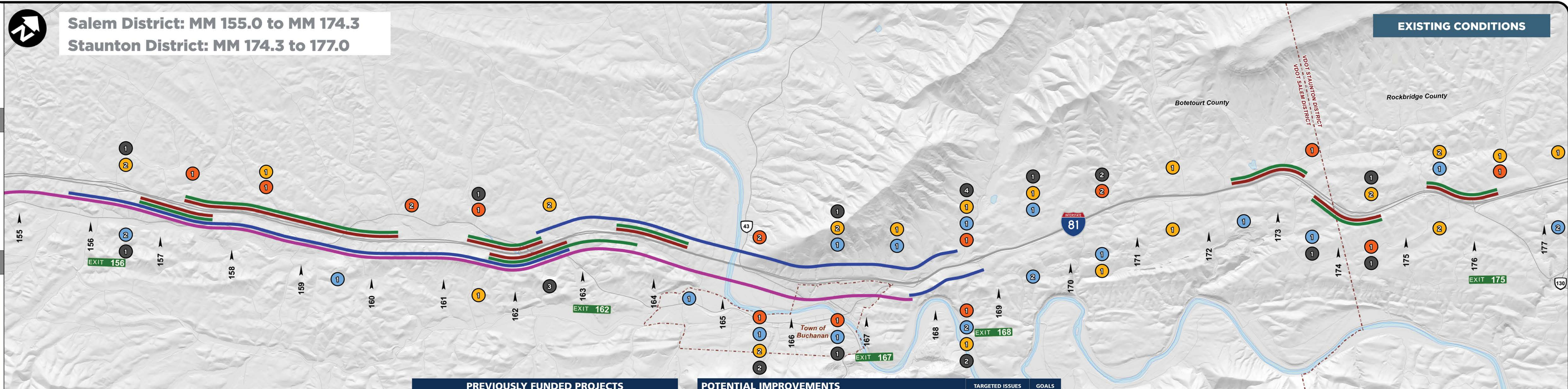


## Reference

► Mile Marker (MM)



Data Sources: Virginia Department of Transportation 2019, Virginia Geographic Information Network 2019, Airbus, USGS, NOAA, NASA, NOAA, CGIAR, GEBCO, NCEAS, NLS, OS, NMA, Geodatastyrelsen, GSA, GSI and the GIS User Community, Virginia Geographic



PREVIOUSLY FUNDED PROJECTS		
ID #	UPC #	DESCRIPTION
1	116199	Extend NB acceleration lane at Exit 162
2	115794	Add flashing chevrons along NB curve between MM 172 and MM 176
3A	116202	Extend SB acceleration lane at Troutville Safety Rest Area
3B	116202	Extend SB deceleration lane at Troutville Safety Rest Area
4	115794	Add flashing chevrons along SB curve between MM 175 and MM 171

POTENTIAL IMPROVEMENTS				TARGETED ISSUES				GOAL	
#	LOCATION	DIRECTION	POTENTIAL IMPROVEMENTS	Crash Severity	Crash Frequency	Person-hours of Delay	Responsiveness of Incident Triage	Improve Safety	Reduce Congestion
5	Exit 150 to Exit 167	NB	Widen to three lanes (Continued from Board 3)	✓	✓	✓	✓	✓	
6	Exit 156	NB	Extend acceleration lane	✓	✓		✓		
7	Exit 167 and Exit 168	NB	Realign roadway				✓		
8	Exit 167 to Exit 150	SB	Widen to three lanes (Continued from Board 3)	✓	✓	✓	✓	✓	
9	Exit 168 to Exit 167	SB	Realign roadway				✓		
10	Exit 175	SB	Extend acceleration lane	✓	✓		✓		

