

INTERSTATE

81

IMPROVE 81

Project Location

Board 1 of 7 – Staunton

Scale

Miles

00.751.5

US Feet

01,5003,0006,0009,000

LEGEND: Existing Conditions

PERFORMANCE MEASURES BY DIRECTION

Existing Widening Projects

Crash Severity

Crash Frequency

Person-Hours of Delay

Person-Hours of Incident Delay (lane closure > 1 hr)

EXAMPLES OF PUBLIC COMMENTS

3 comments indicated safety issues in this segment.

4 comments indicated congestion issues in this segment.

5 comments indicated truck operations issues in this segment.

3 comments indicated other issues in this segment.

PUBLIC COMMENTS (Summarized by Mile in Each Direction)

Safety

Crashes, speeding, and aggressive driving

Truck Operations

Parking, heavy truck volumes

Congestion

Delays, queues (including ramps), difficulty merging and weaving

Other

Grades, curves, narrow shoulders, pavement marking, signing, and other

Indicates number of comments identified by the public in Round 1 of engagement

LEGEND: Potential Improvements

+1 Widening

Auxiliary Lane

Potential Improvement

Acceleration/Deceleration Extension

Realignment

Previously Funded I-81 Corridor Improvement Program Project

Curve Improvements

Truck Climbing Lane

Reference

Mile Marker (MM)

VDOT

Virginia Department of Transportation

Data Sources: Virginia Department of Transportation 2019, Virginia Geographic Information Network 2019, Airbus, USGS, NOAA, CGIAR, GEBCO, NCEAS, NLS, OS, NMA, Geodatastyrelsen, GSA, GSI and the GIS User Community, Virginia Geographic

Staunton District: MM 177 to MM 199

EXISTING CONDITIONS

PREVIOUSLY FUNDED PROJECTS

ID #	UPC #	DESCRIPTION
1	116246	Extend NB acceleration lane at Exit 188

POTENTIAL IMPROVEMENTS

#	LOCATION	DIRECTION	POTENTIAL IMPROVEMENTS	Crash Severity	Crash Frequency	Person-Hours of Delay	Person-Hours of Incident Delay	Improve Safety	Reduce Congestion
2	Exit 188B	NB	Extend deceleration lane	✓	✓		✓		
3	Exit 191 to Exit 195	NB	Widen to three lanes	✓	✓	✓	✓	✓	✓
4	MM 190 to MM 187	SB	Construct truck climbing lane	✓	✓		✓	✓	
5	Exit 195 to MM 190	SB	Widen to three lanes				✓	✓	
6	Exit 200 to Exit 195	SB	Widen to three lanes (Continues on Board 2)	✓	✓	✓	✓	✓	✓

POTENTIAL IMPROVEMENTS

Reference

Mile Marker (MM)

IMPROVE **81**

Project Location

Board 2 of 7 – Staunton

Scale

Miles

0 0.75 1.5

US Feet

0 1,500 3,000 6,000 9,000

Legend

LEGEND: Existing Conditions

PERFORMANCE MEASURES BY DIRECTION

Existing Widening Projects

Crash Severity

Crash Frequency

Person-Hours of Delay

Person-Hours of Incident Delay (lane closure > 1 hr)

PUBLIC COMMENTS (Summarized by Mile in Each Direction)

Safety

Crashes, speeding, and aggressive driving

Truck Operations

Parking, heavy truck volumes

Congestion

Delays, queues (including ramp), difficulty merging and weaving

Other

Grades, curves, narrow shoulders, pavement marking, signing, and other

Indicates number of comments identified by the public in Round 1 of engagement

EXAMPLES OF PUBLIC COMMENTS

3

3 comments indicated safety issues in this segment.

4

4 comments indicated congestion issues in this segment.

5

5 comments indicated truck operations issues in this segment.

3

3 comments indicated other issues in this segment.

LEGEND: Potential Improvements

+1 Widening

Auxiliary Lane

Potential Improvement

Acceleration/Deceleration Extension

Realignment

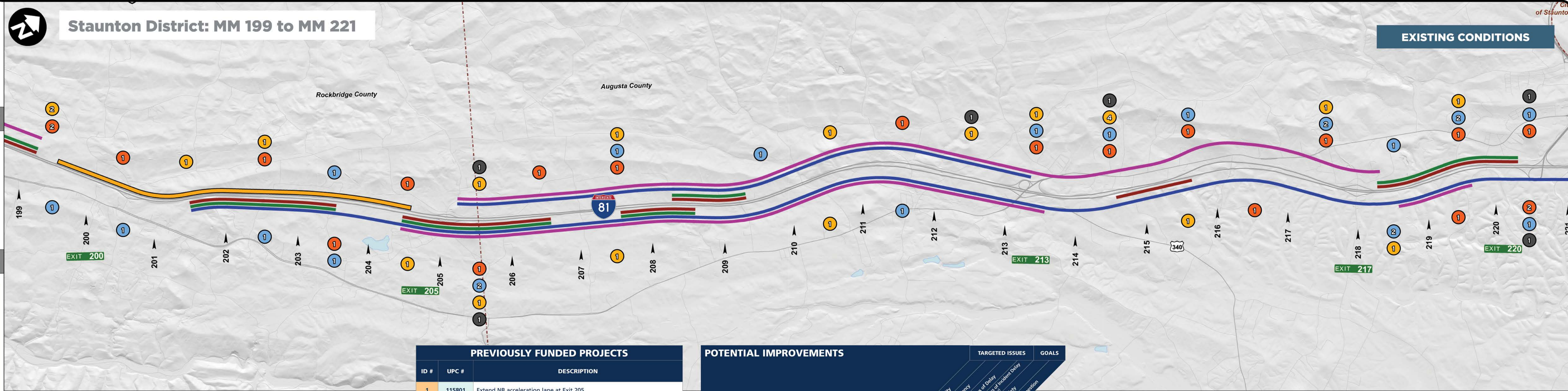
Previously Funded I-81 Corridor Improvement Program Project

Curve Improvements

Truck Climbing Lane

Reference

Mile Marker (MM)



INTERSTATE

81

IMPROVE 81

Project Location

Board 3 of 7 – Staunton

Scale

Miles

00.751.5

US Feet

01,5003,0006,0009,000

Legend

LEGEND: Existing Conditions

PERFORMANCE MEASURES BY DIRECTION

Existing Widening Projects

Crash Severity

Crash Frequency

Person-Hours of Delay

Person-Hours of Incident Delay (lane closure > 1 hr)

PUBLIC COMMENTS (Summarized by Mile in Each Direction)

Safety

Crashes, speeding, and aggressive driving

Truck Operations

Parking, heavy truck volumes

Other

Grades, curves, narrow shoulders, pavement marking, signing, and other

Congestion

Delays, queues (including ramp), difficulty merging and weaving

#

Indicates number of comments identified by the public in Round 1 of engagement

EXAMPLES OF PUBLIC COMMENTS

3

3 comments indicated safety issues in this segment.

4

4 comments indicated congestion issues in this segment.

5

5 comments indicated truck operations issues in this segment.

3

3 comments indicated other issues in this segment.

LEGEND: Potential Improvements

+1

Widening

Auxiliary Lane

Potential Improvement

Acceleration/Deceleration Extension

Realignment

Previously Funded I-81 Corridor Improvement Program Project

Curve Improvements

Truck Climbing Lane

Reference

Mile Marker (MM)

VDOT

Virginia Department of Transportation

Data Sources: Virginia Department of Transportation 2019, Virginia Geographic Information Network 2019, Airbus, USGS, NGA, NASA, NOAA, CGIAR, GEBCO, NCEAS, NLS, OS, NMA, Geodatastyrelsen, GSA, GSI and the GIS User Community, Virginia Geographic

Staunton District: MM 221 to MM 243

EXISTING CONDITIONS

Augusta County

Rockingham County

City of Staunton

Town of Mount Crawford

Town of Bridgewater

EXIT 221

EXIT 222

EXIT 223

EXIT 224

EXIT 225

EXIT 226

EXIT 227

EXIT 228

EXIT 229

EXIT 230

EXIT 231

EXIT 232

EXIT 233

EXIT 234

EXIT 235

EXIT 236

EXIT 237

EXIT 238

EXIT 239

EXIT 240

EXIT 241

EXIT 242

PREVIOUSLY FUNDED PROJECTS

ID #	UPC #	DESCRIPTION
1	116279	Add SB auxiliary lane between Exit 221 and Exit 220
2	116269	Widen both directions to three lanes between Exit 221 and Exit 225
3	116276	Extend SB acceleration lane at Mt. Sidney Rest Area
4	116271	Extend NB acceleration lane at Mt. Sidney Rest Area
5	116275	Extend SB deceleration lane at Mt. Sidney Rest Area
6	116277	Add NB truck climbing lane near NB Weyers Cave exit
7	116278	Add SB truck climbing lane near SB Weyers Cave exit
8	116280	Widen both directions to three lanes between Exit 243 and Exit 247 (Continues on Board 4)

POTENTIAL IMPROVEMENTS

#	LOCATION	DIRECTION	POTENTIAL IMPROVEMENTS	TARGETED ISSUES					GOALS	
				Crash Severity	Crash Frequency	Person-Hours of Delay	Person-Hours of Incident Delay	Improve Safety	Reduce Congestion	
9	Exit 220 to Exit 221	NB	Construct auxiliary lane between Exit 220 and Exit 221 (Continued from Board 2)							
10	Exit 225 to MM 235	NB	Widen to three lanes							
11	Exit 227	NB	Extend acceleration lane							
12	MM 238 to MM 242	NB	Widen to three lanes							
13	Exit 221 to Exit 217	SB	Widen to three lanes (Continued from Board 2)							
14	MM 235 to Exit 225	SB	Widen to three lanes							
15	MM 242 to MM 238	SB	Widen to three lanes (Continues to Board 4)							

POTENTIAL IMPROVEMENTS

+1

EXIT 221 TO EXIT 217

+1

MM 235 TO MM 225

+1

EXIT 225 TO EXIT 235

+1

EXIT 227

+1

MM 238 TO MM 242

+1

MM 242 TO MM 238

EXIT 221

EXIT 222

EXIT 223

EXIT 224

EXIT 225

EXIT 226

EXIT 227

EXIT 228

EXIT 229

EXIT 230

EXIT 231

EXIT 232

EXIT 233

EXIT 234

EXIT 235

EXIT 236

EXIT 237

EXIT 238

EXIT 239

EXIT 240

EXIT 241

EXIT 242

IMPROVE **81**

Project Location

Board 4 of 7 – Staunton

Scale

Miles

0 0.75 1.5

US Feet

0 1,500 3,000 6,000 9,000

Legend

LEGEND: Existing Conditions

PERFORMANCE MEASURES BY DIRECTION

Existing Widening Projects

Crash Severity

Crash Frequency

Person-Hours of Delay

Person-Hours of Incident Delay (lane closure > 1 hr)

PUBLIC COMMENTS (Summarized by Mile in Each Direction)

Safety

Crashes, speeding, and aggressive driving

Truck Operations

Parking, heavy truck volumes

Other

Grades, curves, narrow shoulders, pavement marking, signing, and other

Congestion

Delays, queues (including ramps), difficulty merging and weaving

#

Indicates number of comments identified by the public in Round 1 of engagement

EXAMPLES OF PUBLIC COMMENTS

3

3 comments indicated safety issues in this segment.

4

4 comments indicated congestion issues in this segment.

5

5 comments indicated truck operations issues in this segment.

3

3 comments indicated other issues in this segment.

LEGEND: Potential Improvements

+1 Widening

Auxiliary Lane

Potential Improvement

Acceleration/Deceleration Extension

Realignment

Previously Funded I-81 Corridor Improvement Program Project

Curve Improvements

Truck Climbing Lane

Reference

Mile Marker (MM)

Virginia Department of Transportation

Data Sources: Virginia Department of Transportation 2019, Virginia Geographic Information Network 2019, Airbus, USGS, NOAA, NASA, NOAA, CGIAR, GEBCO, NCEAS, NLS, OS, NMA, Geodatastyrelsen, GSA, GSI and the GIS User Community, Virginia Geographic

Staunton District: MM 243 to MM 264

EXISTING CONDITIONS


PREVIOUSLY FUNDED PROJECTS

ID #	UPC #	DESCRIPTION
1	116280	Widen to three lanes between Exit 243 and Exit 247 (Continued from Board 3)

POTENTIAL IMPROVEMENTS

#	LOCATION	DIRECTION	POTENTIAL IMPROVEMENTS	Crash Severity	Crash Frequency	Person-Hours of Delay	Person-Hours of Incident Delay	Improve Safety	Reduce Congestion
2	MM 238 to MM 242	NB	Widen to three lanes (Continued from Board 3)	✓	✓	✓	✓	✓	✓
3	MM 242 to MM 238	SB	Widen to three lanes (Continued from Board 3)	✓	✓	✓	✓	✓	✓
4	Exit 251	SB	Extend acceleration lane	✓	✓			✓	

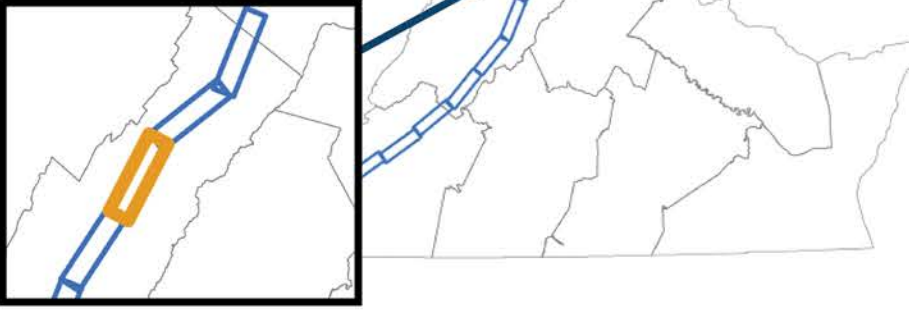
POTENTIAL IMPROVEMENTS



IMPROVE **81**

Project Location

Board 5 of 7 – Staunton



Scale

0 0.75 1.5 Miles

0 1,500,000 6,000 9,000 US Feet

Legend

LEGEND: Existing Conditions

PERFORMANCE MEASURES BY DIRECTION

Existing Widening Projects

Crash Severity

Crash Frequency

Person-Hours of Delay

Person-Hours of Incident Delay (lane closure > 1 hr)

PUBLIC COMMENTS (Summarized by Mile in Each Direction)

Safety

Crashes, speeding, and aggressive driving

Truck Operations

Parking, heavy truck volumes

Other

Grades, curves, narrow shoulders, pavement marking, signing, and other

Congestion

Delays, queues (including ramps), difficulty merging and weaving

#

Indicates number of comments identified by the public in Round 1 of engagement

EXAMPLES OF PUBLIC COMMENTS

3

3 comments indicated safety issues in this segment.

4

4 comments indicated congestion issues in this segment.

5

5 comments indicated truck operations issues in this segment.

3

3 comments indicated other issues in this segment.

LEGEND: Potential Improvements

+1 Widening

Auxiliary Lane

Potential Improvement

Acceleration/Deceleration Extension

Realignment

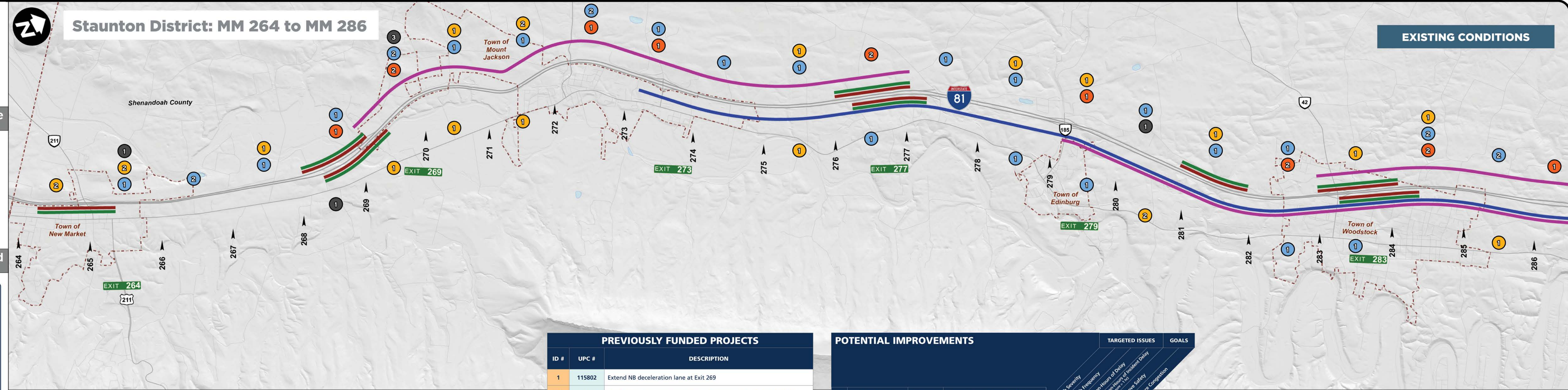
Previously Funded I-81 Corridor Improvement Program Project

Curve Improvements

Truck Climbing Lane

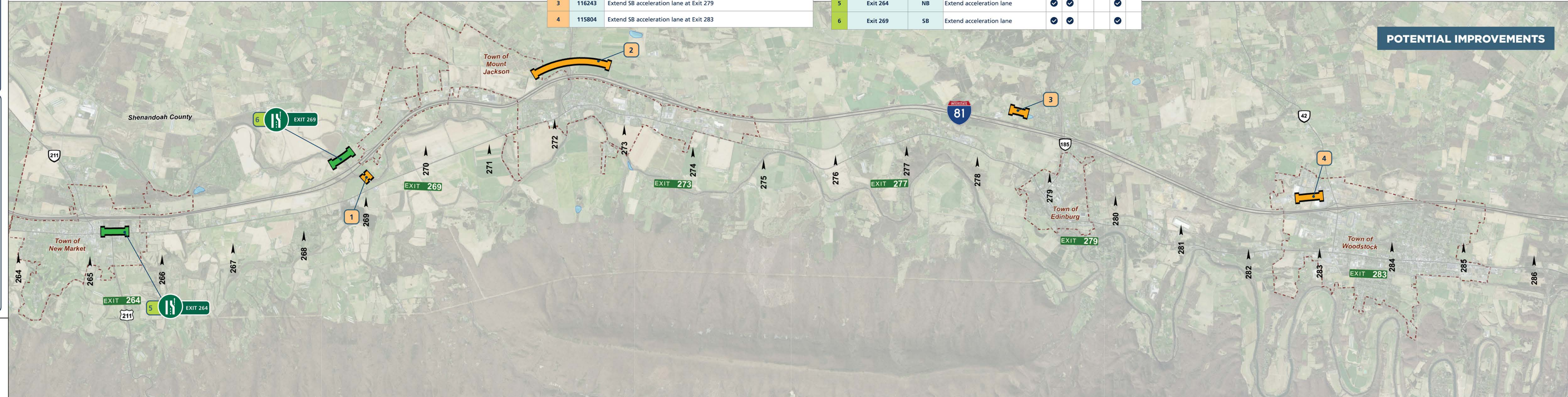
Reference


➤ Mile Marker (MM)



PREVIOUSLY FUNDED PROJECTS		
ID #	UPC #	DESCRIPTION
1	115802	Extend NB deceleration lane at Exit 269
2	115848	Add flashing chevrons along SB curve between MM 272 and MM 273
3	116243	Extend SB acceleration lane at Exit 279
4	115804	Extend SB acceleration lane at Exit 283

POTENTIAL IMPROVEMENTS				TARGETED ISSUES				GOALS	
#	LOCATION	DIRECTION	POTENTIAL IMPROVEMENTS	POTENTIAL IMPROVEMENTS					
				Crash Severity	Crash Frequency	Person-Hours of Delay	Person-Hours of Incident Delay	Improve Safety	Reduce Congestion
5	Exit 264	NB	Extend acceleration lane	✓	✓		✓		
6	Exit 269	SB	Extend acceleration lane	✓	✓		✓		

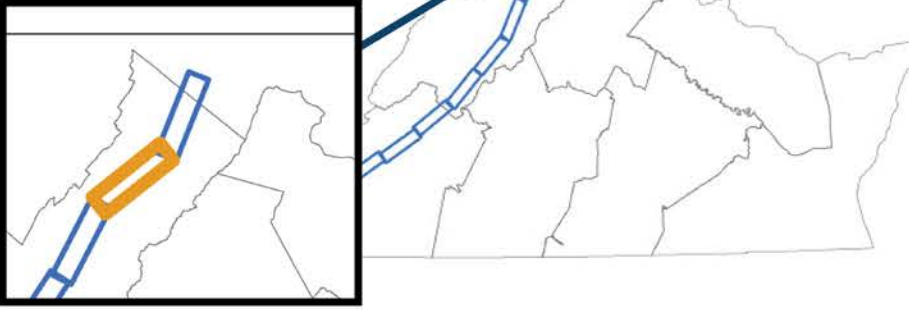




IMPROVE 81

Project Location

Board 6 of 7 – Staunton



Scale

Miles: 0, 0.75, 1.5
US Feet: 0, 1,500, 3,000, 6,000, 9,000

Legend

LEGEND: Existing Conditions

PERFORMANCE MEASURES BY DIRECTION

- Existing Widening Projects
- Crash Severity
- Crash Frequency
- Person-Hours of Delay
- Person-Hours of Incident Delay (lane closure > 1 hr)

PUBLIC COMMENTS
(Summarized by Mile in Each Direction)

- Safety**
Crashes, speeding, and aggressive driving
- Truck Operations**
Parking, heavy truck volumes
- Congestion**
Delays, queues (including ramp), difficulty merging and weaving
- Other**
Grades, curves, narrow shoulders, pavement marking, signing, and other

Indicates number of comments identified by the public in Round 1 of engagement

EXAMPLES OF PUBLIC COMMENTS

- 3 comments indicated safety issues in this segment.
- 4 comments indicated congestion issues in this segment.
- 5 comments indicated truck operations issues in this segment.
- 3 comments indicated other issues in this segment.

LEGEND: Potential Improvements

- +1 Widening
- Auxiliary Lane
- Potential Improvement
- Acceleration/Deceleration Extension
- Realignment
- Previously Funded I-81 Corridor Improvement Program Project
- Curve Improvements
- Truck Climbing Lane

Reference

— Mile Marker (MM)

