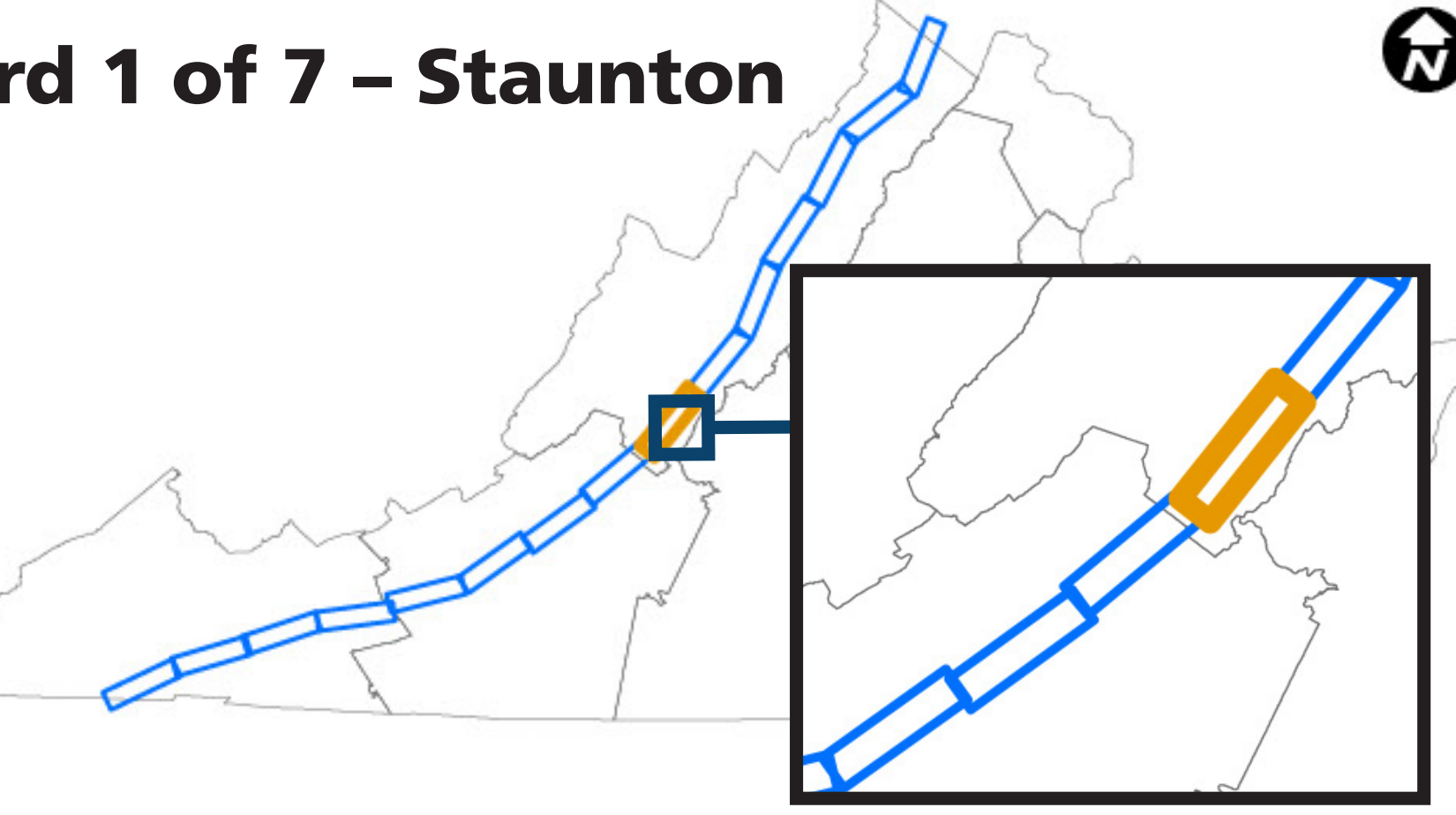


# IMPROVE 81

### Project Location

Board 1 of 7 – Staunton



### Scale

Miles: 0, 0.75, 1.5  
US Feet: 0, 1,500, 3,000, 6,000, 9,000

### Legend

### LEGEND: Existing Conditions

**PERFORMANCE MEASURES BY DIRECTION**

- Existing Widening Projects
- Crash Severity
- Crash Frequency
- Person-Hours of Delay
- Person-Hours of Incident Delay (lane closure > 1 hr)

**PUBLIC COMMENTS**  
(Summarized by Mile in Each Direction)

- Safety**  
Crashes, speeding, and aggressive driving
- Truck Operations**  
Parking, heavy truck volumes
- Congestion**  
Delays, queues (including ramps), difficulty merging and weaving
- Other**  
Grades, curves, narrow shoulders, pavement marking, signing, and other

# Indicates number of comments identified by the public in Round 1 of engagement

### EXAMPLES OF PUBLIC COMMENTS

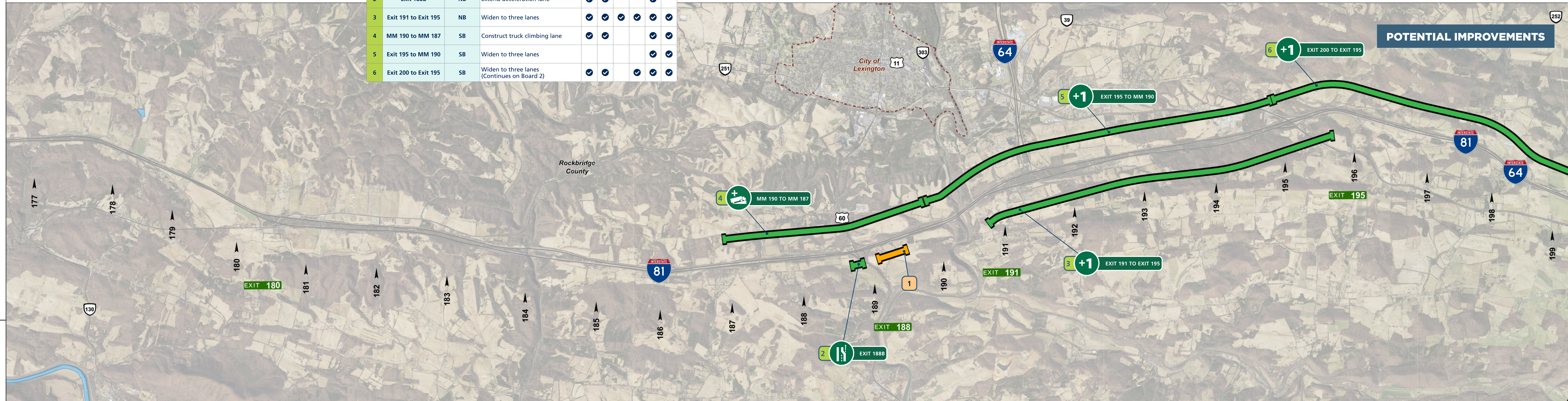
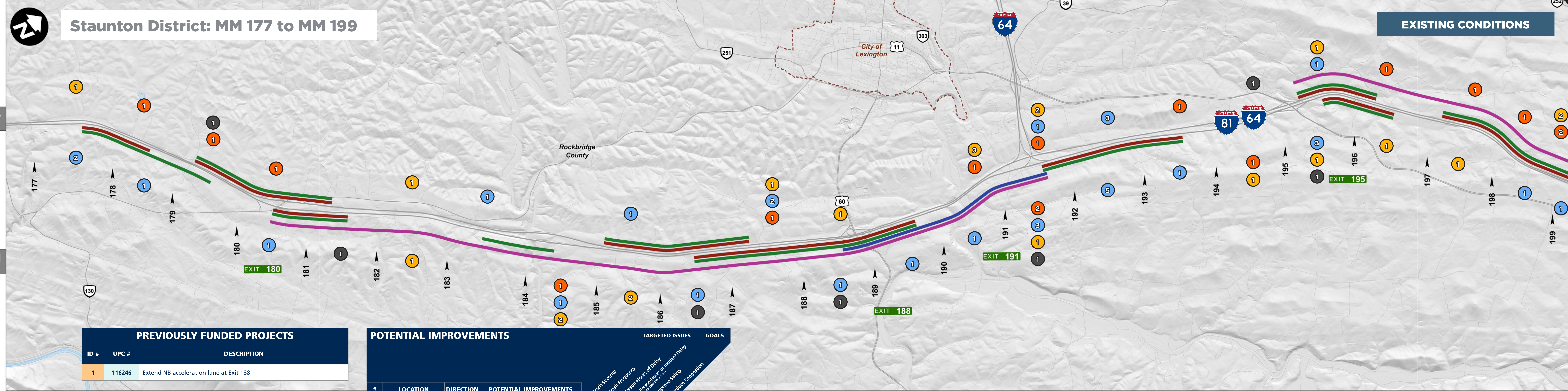
- 3 comments indicated safety issues in this segment.
- 4 comments indicated congestion issues in this segment.
- 5 comments indicated truck operations issues in this segment.
- 3 comments indicated other issues in this segment.

### LEGEND: Potential Improvements

- +1 Widening
- Auxiliary Lane
- Potential Improvement
- Acceleration/Deceleration Extension
- Realignment
- Previously Funded I-81 Corridor Improvement Program Project
- Curve Improvements
- Truck Climbing Lane

### Reference

— Mile Marker (MM)



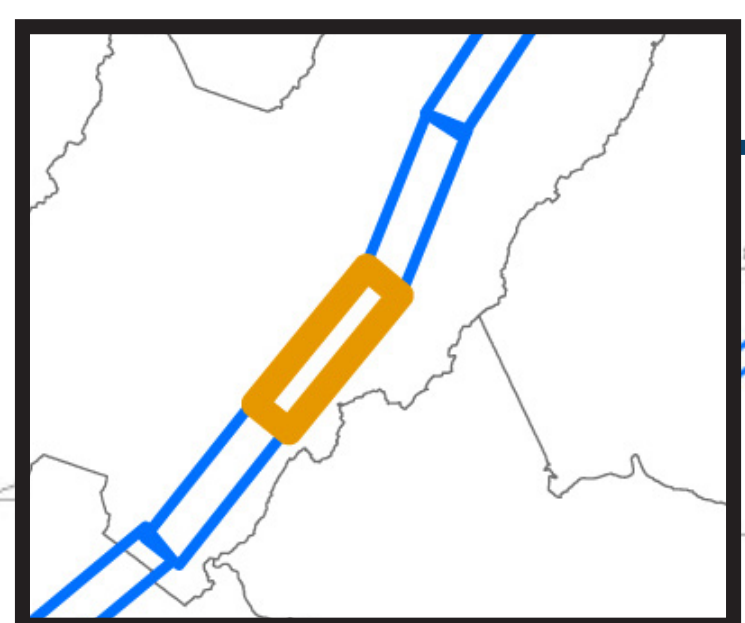




## Project Location

Scale

### Board 2 of 7 – Staunton



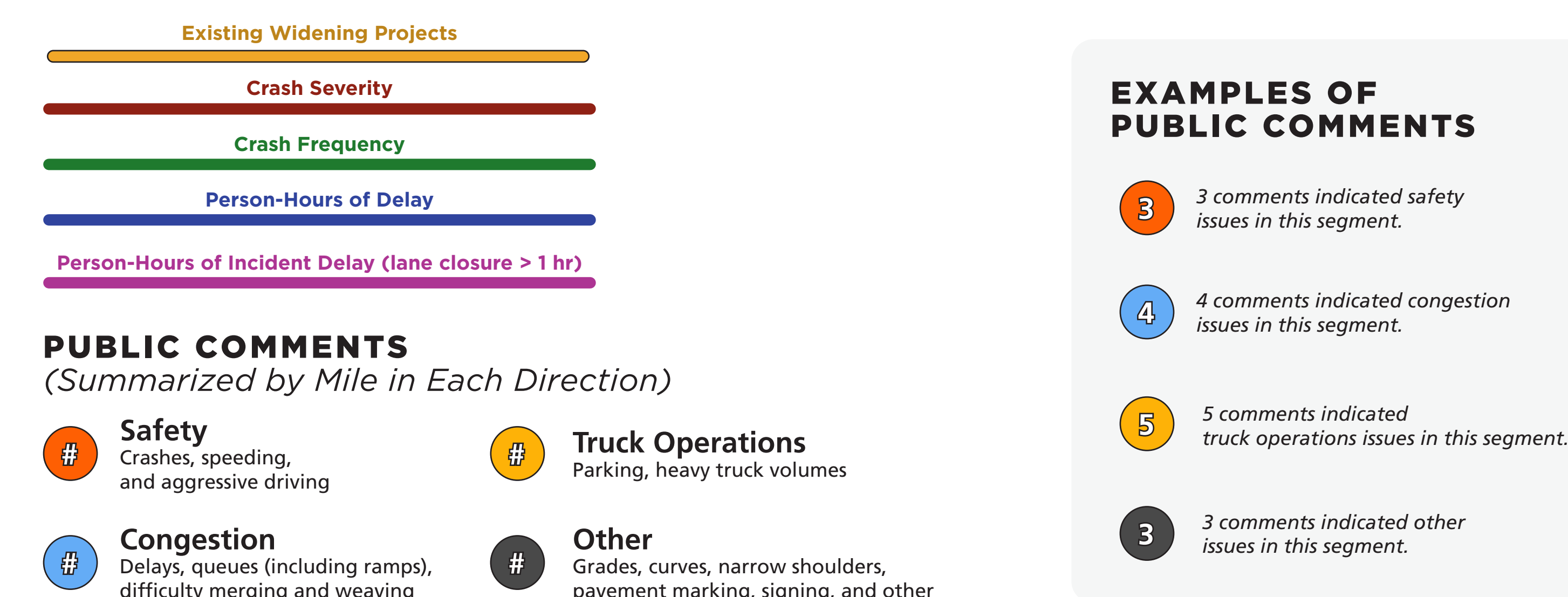
0 0.75 1.5 Miles

0 1,500 3,000 6,000 9,000 US Feet

### Legend

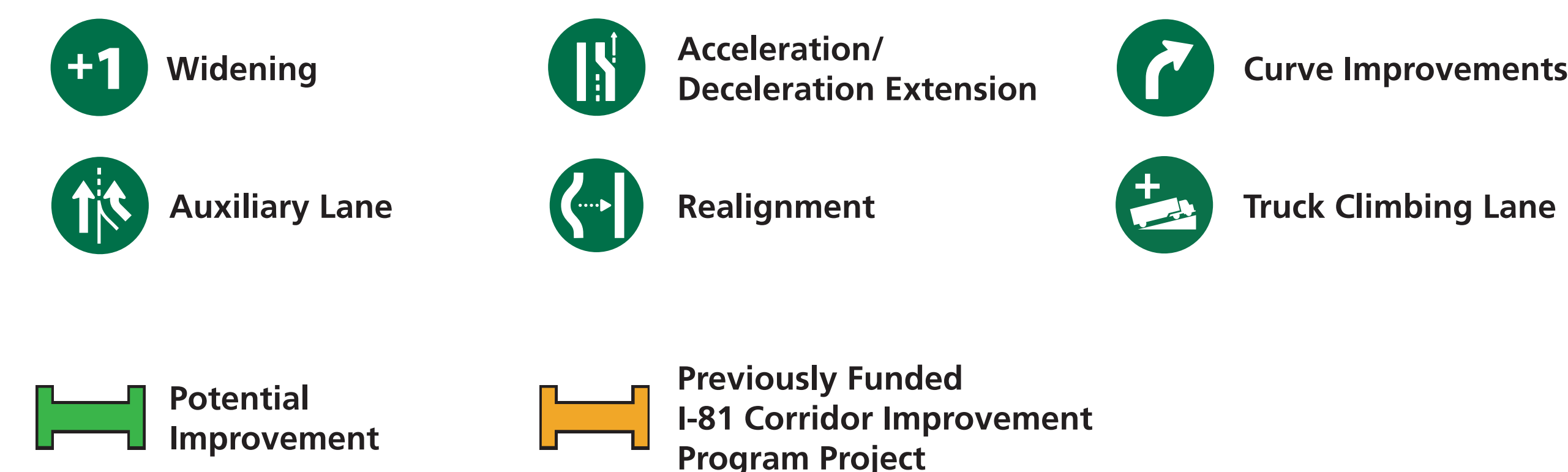
**LEGEND: Existing Conditions**

### PERFORMANCE MEASURES BY DIRECTION



by the public in Round 1 of engagement

**LEGEND: Potential Improvements**

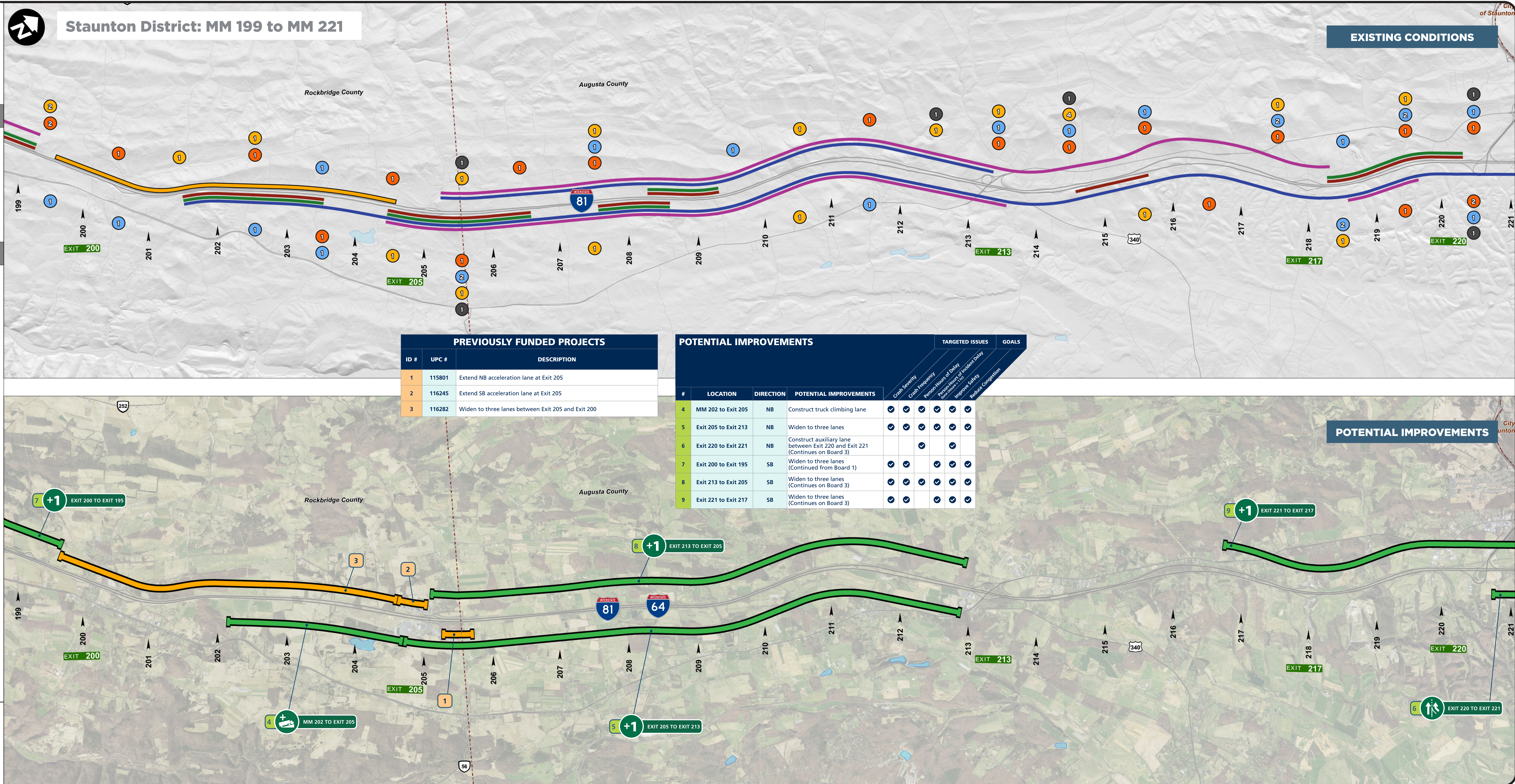


## Reference

► Mile Marker (MM)



Data Sources: Virginia Department of Transportation 2019, Virginia Geographic Information Network 2019, Airbus, USGS, NGA, NASA, NOAA, CGIAR, GEBCO, NCEAS, NLS, OS, NMA, Geodastystrelsen, GSA, GSI and the GIS User Community, Virginia Geographic



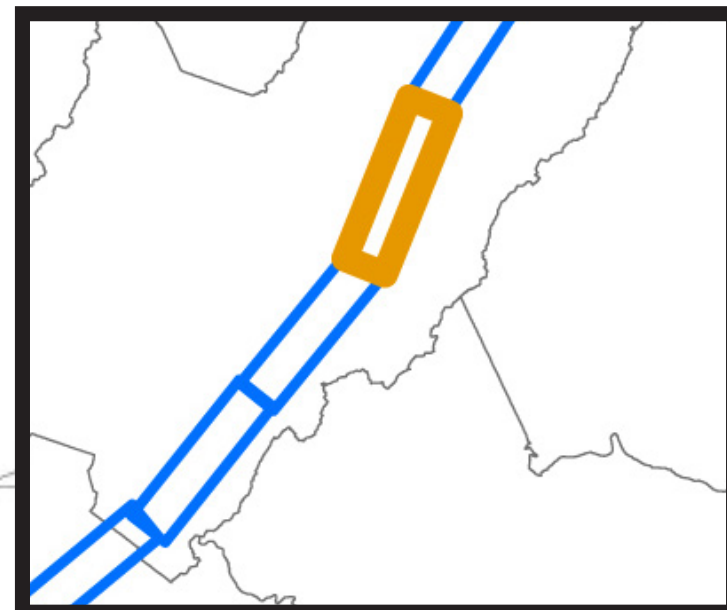




## Project Location

Scale

### Board 3 of 7 – Staunton



### Legend

**LEGEND: Existing Conditions**

### PERFORMANCE MEASURES BY DIRECTION





Factor	Relative Impact (Rank)
Existing Widening Projects	1 (Highest)
Crash Severity	2
Crash Frequency	3
Person-Hours of Delay	4
Person-Hours of Incident Delay (lane closure > 1 hr)	5 (Lowest)

## EXAMPLES OF PUBLIC COMMENTS

- 3 3 comments indicated safety issues in this segment.
- 4 4 comments indicated congestion issues in this segment.
- 5 5 comments indicated truck operations issues in this segment.
- 3 3 comments indicated other issues in this segment.

## PUBLIC COMMENTS

(Summarized by Mile in Each Direction)

-  **Safety**  
Crashes, speeding, and aggressive driving
  -  **Truck Operations**  
Parking, heavy truck volumes
  -  **Congestion**  
Delays, queues (including ramps), difficulty merging and weaving
  -  **Other**  
Grades, curves, narrow shoulders, pavement marking, signing, and other

# Indicates number of comments identified by the public in Round 1 of engagement

**LEGEND: Potential Improvements**

- The diagram illustrates various transportation improvement project types, categorized into four groups:

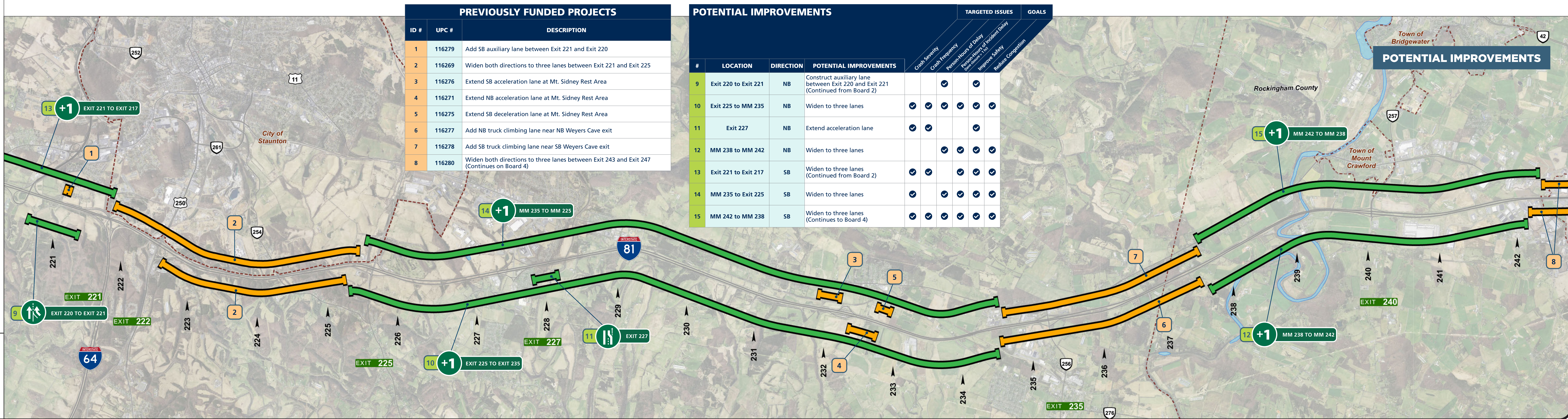
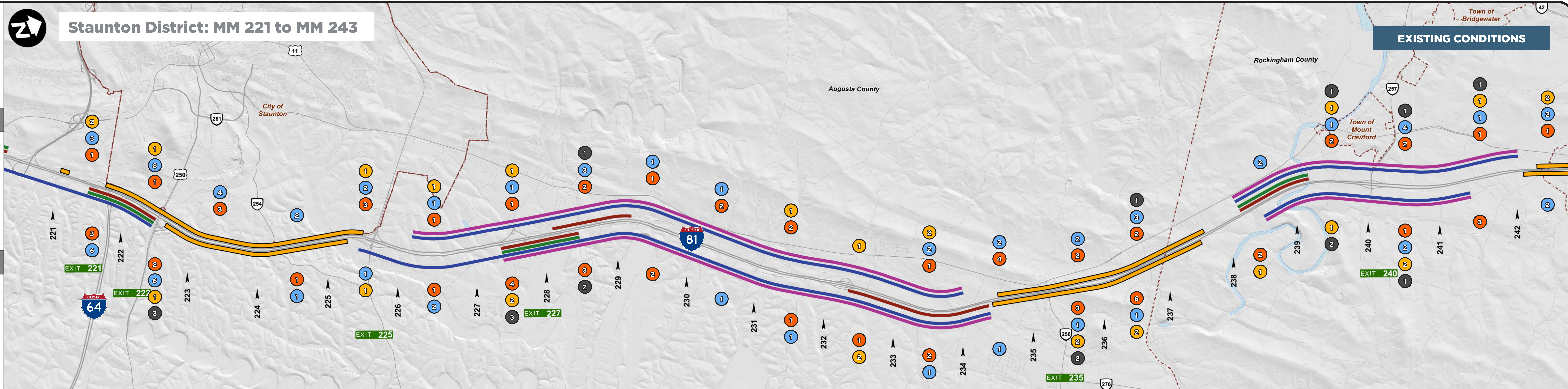
  - Widening (+1)**: Represented by a green circle with a white '+1' icon.
  - Acceleration/Deceleration Extension (A/D)**: Represented by a green circle with a white 'A/D' icon.
  - Curve Improvements (C)**: Represented by a green circle with a white 'C' icon.
  - Auxiliary Lane (A)**: Represented by a green circle with a white 'A' icon.
  - Realignment (R)**: Represented by a green circle with a white 'R' icon.
  - Truck Climbing Lane (T)**: Represented by a green circle with a white 'T' icon.
  - Potential Improvement (P)**: Represented by a green circle with a white 'P' icon.
  - Previously Funded I-81 Corridor Improvement Program Project (F)**: Represented by a green circle with a white 'F' icon.

## Reference

► Mile Marker (MM)



Data Sources: Virginia Department of Transportation 2019, Virginia Geographic Information Network 2019, Airbus, USGS, NOAA, NASA, NOAA, CGIAR, GEMCO, NCEAS, NLS, OS, NMA, Geodatastyrelsen, GSA, GSI and the GIS User Community, Virginia Geographic





INTERSTATE

81

IMPROVE 81

Project Location

Board 4 of 7 – Staunton

Scale

Miles

00.751.5

US Feet

01,5003,0006,0009,000

Legend

LEGEND: Existing Conditions

PERFORMANCE MEASURES BY DIRECTION

Existing Widening Projects

Crash Severity

Crash Frequency

Person-Hours of Delay

Person-Hours of Incident Delay (lane closure > 1 hr)

PUBLIC COMMENTS (Summarized by Mile in Each Direction)

Safety

Crashes, speeding, and aggressive driving

Truck Operations

Parking, heavy truck volumes

Other

Grades, curves, narrow shoulders, pavement marking, signing, and other

Congestion

Delays, queues (including ramps), difficulty merging and weaving

#

Indicates number of comments identified by the public in Round 1 of engagement

EXAMPLES OF PUBLIC COMMENTS

3

3 comments indicated safety issues in this segment.

4

4 comments indicated congestion issues in this segment.

5

5 comments indicated truck operations issues in this segment.

3

3 comments indicated other issues in this segment.

LEGEND: Potential Improvements

+1 Widening

Auxiliary Lane

Potential Improvement

Acceleration/Deceleration Extension

Realignment

Previously Funded I-81 Corridor Improvement Program Project

Curve Improvements

Truck Climbing Lane

Reference

Mile Marker (MM)

VDOT

Virginia Department of Transportation

Data Sources: Virginia Department of Transportation 2019, Virginia Geographic Information Network 2019, Airbus, USGS, NOAA, NASA, NOAA, CGIAR, GEBCO, NCEAS, NLS, OS, NMA, Geodatastyrelsen, GSA, GSI and the GIS User Community, Virginia Geographic

2

Staunton District: MM 243 to MM 264

EXISTING CONDITIONS

243

244

245

246

247

248

249

250

251

252

253

254

255

256

257

258

259

260

261

262

263

264

EXIT 243

EXIT 245

EXIT 247

EXIT 251

EXIT 257

PREVIOUSLY FUNDED PROJECTS

ID #	UPC #	DESCRIPTION
1	116280	Widen to three lanes between Exit 243 and Exit 247 (Continued from Board 3)

POTENTIAL IMPROVEMENTS

#	LOCATION	DIRECTION	POTENTIAL IMPROVEMENTS	Crash Severity	Crash Frequency	Person-Hours of Delay	Person-Hours of Incident Delay (lane closure > 1 hr)	Improve Safety	Reduce Congestion
2	MM 238 to MM 242	NB	Widen to three lanes (Continued from Board 3)	✓	✓	✓	✓	✓	✓
3	MM 242 to MM 238	SB	Widen to three lanes (Continued from Board 3)	✓	✓	✓	✓	✓	✓
4	Exit 251	SB	Extend acceleration lane	✓	✓			✓	

POTENTIAL IMPROVEMENTS

3

+1

MM 242 TO MM 238

2

+1

MM 238 TO MM 242

4

IS

EXIT 251

EXIT 243


EXIT 245

EXIT 247

EXIT 251

EXIT 257

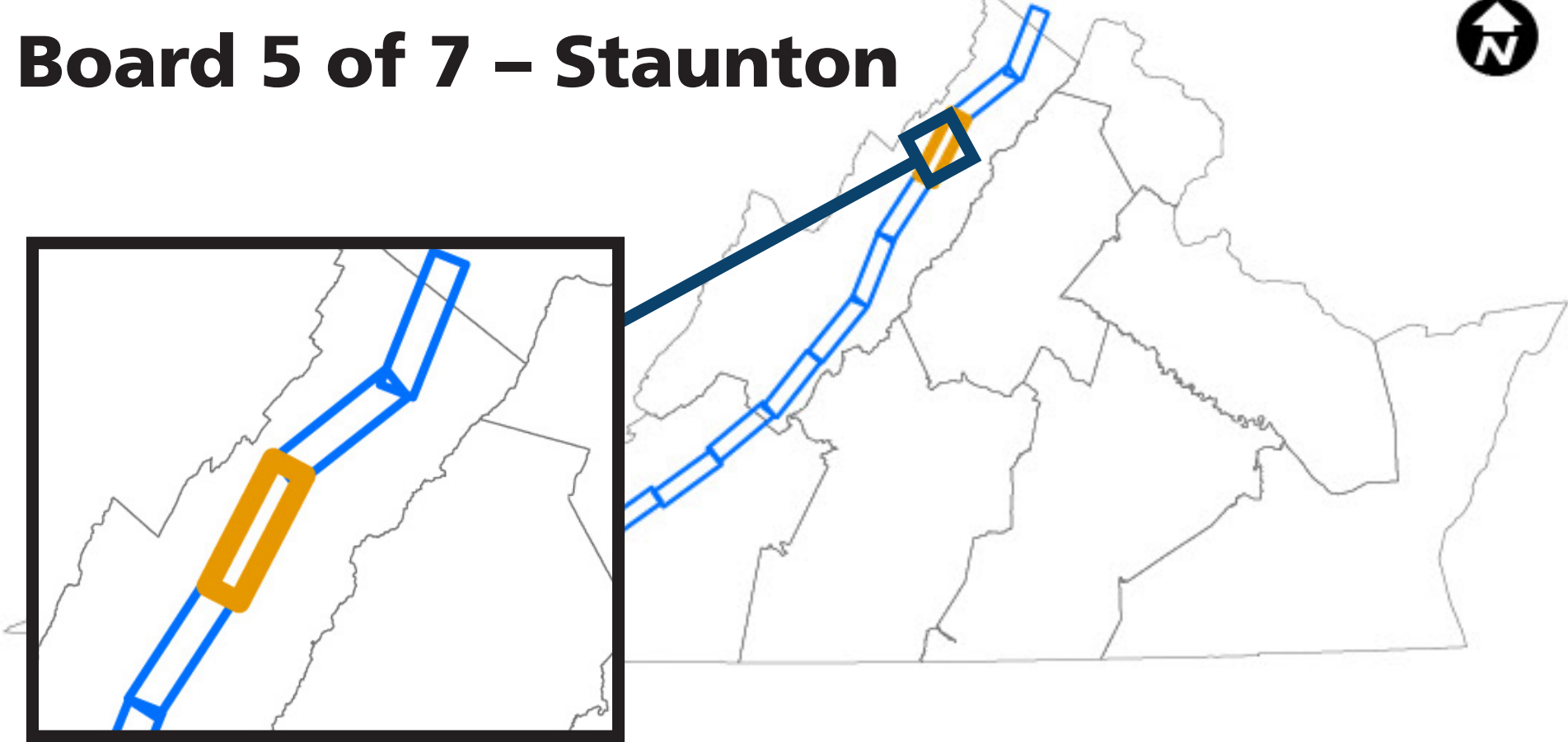




# IMPROVE 81

Project Location

Board 5 of 7 – Staunton



Scale

Miles: 0, 0.75, 1.5

US Feet: 0, 1,500, 3,000, 6,000, 9,000

Legend

### LEGEND: Existing Conditions

**PERFORMANCE MEASURES BY DIRECTION**

- Existing Widening Projects
- Crash Severity
- Crash Frequency
- Person-Hours of Delay
- Person-Hours of Incident Delay (lane closure > 1 hr)

**PUBLIC COMMENTS**  
(Summarized by Mile in Each Direction)

- Safety**  
Crashes, speeding, and aggressive driving
- Truck Operations**  
Parking, heavy truck volumes
- Congestion**  
Delays, queues (including ramps), difficulty merging and weaving
- Other**  
Grades, curves, narrow shoulders, pavement marking, signing, and other

# Indicates number of comments identified by the public in Round 1 of engagement

### EXAMPLES OF PUBLIC COMMENTS

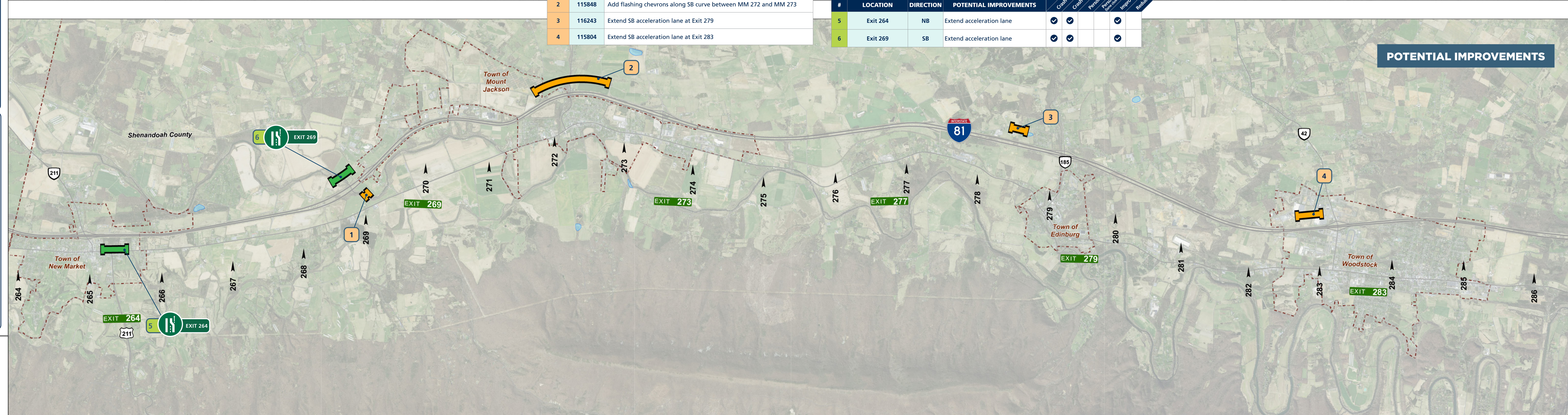
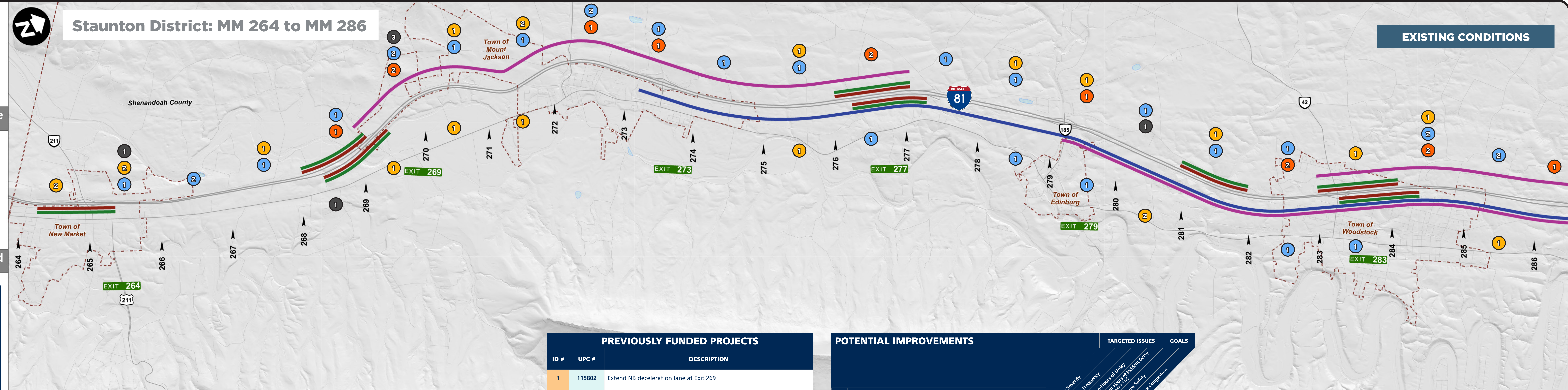
- 3 comments indicated safety issues in this segment.
- 4 comments indicated congestion issues in this segment.
- 5 comments indicated truck operations issues in this segment.
- 3 comments indicated other issues in this segment.

### LEGEND: Potential Improvements


- +1 Widening
- Auxiliary Lane
- Potential Improvement
- Acceleration/Deceleration Extension
- Realignment
- Previously Funded I-81 Corridor Improvement Program Project
- Curve Improvements
- Truck Climbing Lane

Reference

— Mile Marker (MM)








# IMPROVE 81

### Project Location

Board 6 of 7 – Staunton



### Scale

Miles: 0, 0.75, 1.5  
US Feet: 0, 1,500, 3,000, 6,000, 9,000

### Legend

### LEGEND: Existing Conditions

**PERFORMANCE MEASURES BY DIRECTION**

- Existing Widening Projects
- Crash Severity
- Crash Frequency
- Person-Hours of Delay
- Person-Hours of Incident Delay (lane closure > 1 hr)

**PUBLIC COMMENTS**  
(Summarized by Mile in Each Direction)

- Safety**  
Crashes, speeding, and aggressive driving
- Truck Operations**  
Parking, heavy truck volumes
- Congestion**  
Delays, queues (including ramps), difficulty merging and weaving
- Other**  
Grades, curves, narrow shoulders, pavement marking, signing, and other

# Indicates number of comments identified by the public in Round 1 of engagement

### EXAMPLES OF PUBLIC COMMENTS

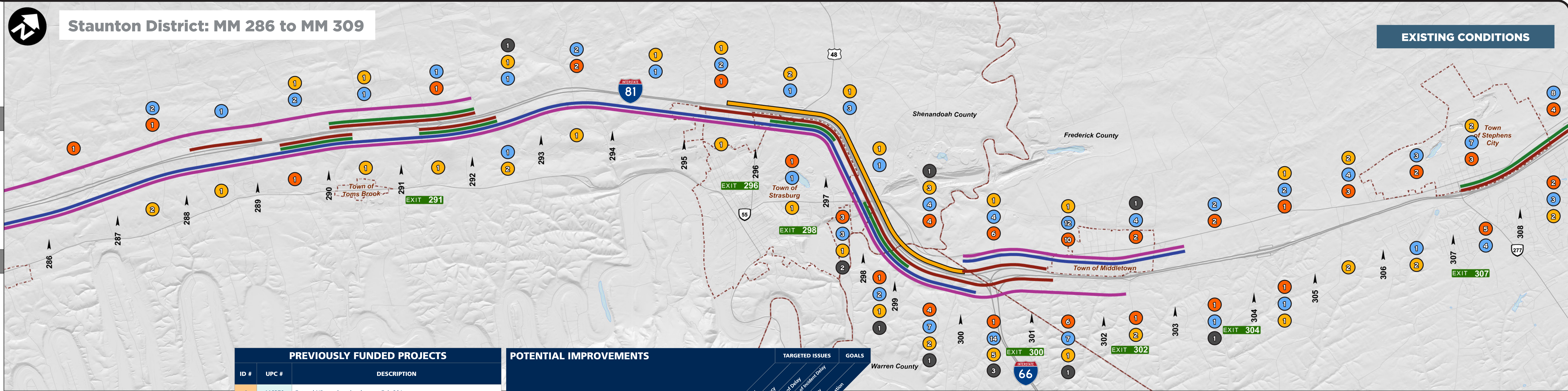
- 3 comments indicated safety issues in this segment.
- 4 comments indicated congestion issues in this segment.
- 5 comments indicated truck operations issues in this segment.
- 3 comments indicated other issues in this segment.

### LEGEND: Potential Improvements

- +1 Widening
- Auxiliary Lane
- Potential Improvement
- Acceleration/Deceleration Extension
- Realignment
- Previously Funded I-81 Corridor Improvement Program Project
- Curve Improvements
- Truck Climbing Lane

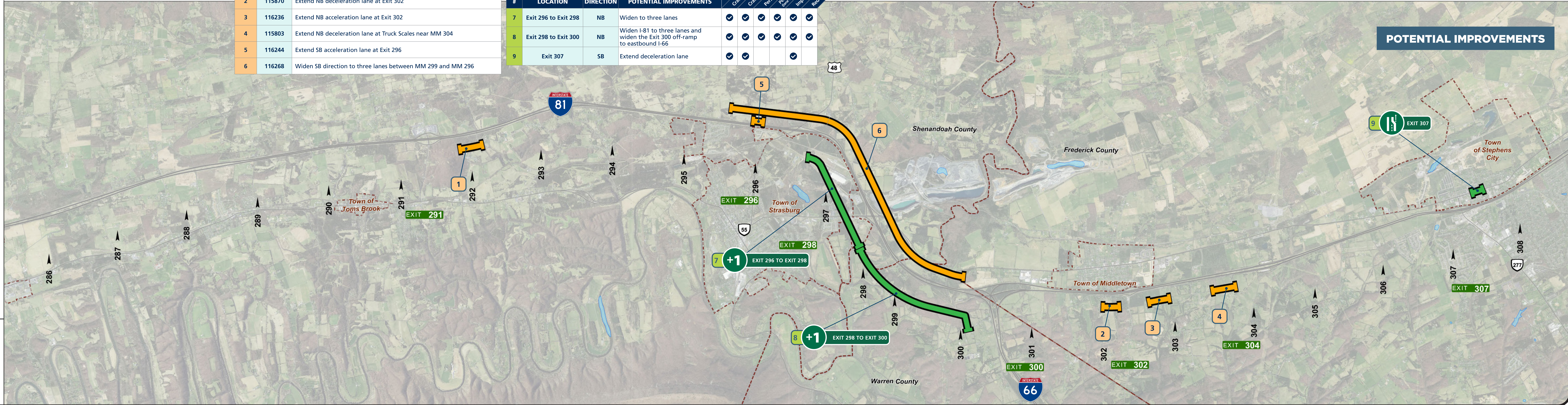
### Reference

— Mile Marker (MM)




PREVIOUSLY FUNDED PROJECTS		
ID #	UPC #	DESCRIPTION
1	116270	Extend NB acceleration lane at Exit 291
2	115870	Extend NB deceleration lane at Exit 302
3	116236	Extend NB acceleration lane at Exit 302
4	115803	Extend NB deceleration lane at Truck Scales near MM 304
5	116244	Extend SB acceleration lane at Exit 296
6	116268	Widen SB direction to three lanes between MM 299 and MM 296

POTENTIAL IMPROVEMENTS				TARGETED ISSUES			GOALS		
#	LOCATION	DIRECTION	POTENTIAL IMPROVEMENTS						
				Crash Severity	Crash Frequency	Person-Hours of Delay (Person-Hours = 1 hr)	Person-Hours of Incident Delay	Improve Safety	Reduce Congestion
7	Exit 296 to Exit 298	NB	Widen to three lanes	✓	✓	✓	✓	✓	✓
8	Exit 298 to Exit 300	NB	Widen I-81 to three lanes and widen the Exit 300 off-ramp to eastbound I-66	✓	✓	✓	✓	✓	✓
9	Exit 307	SB	Extend deceleration lane	✓	✓			✓	








# IMPROVE 81

### Project Location

Board 7 of 7 – Staunton



### Scale

Miles

0 0.75 1.5

US Feet

0 1,500 3,000 6,000 9,000

### Legend

Existing Widening Projects

Crash Severity

Crash Frequency

Person-Hours of Delay

Person-Hours of Incident Delay (lane closure > 1 hr)

**PUBLIC COMMENTS**  
(Summarized by Mile in Each Direction)

**Safety**  
Crashes, speeding, and aggressive driving

**Truck Operations**  
Parking, heavy truck volumes

**Other**  
Grades, curves, narrow shoulders, pavement marking, signing, and other

**Congestion**  
Delays, queues (including ramps), difficulty merging and weaving

# Indicates number of comments identified by the public in Round 1 of engagement

**EXAMPLES OF PUBLIC COMMENTS**

3

3 comments indicated safety issues in this segment.

4

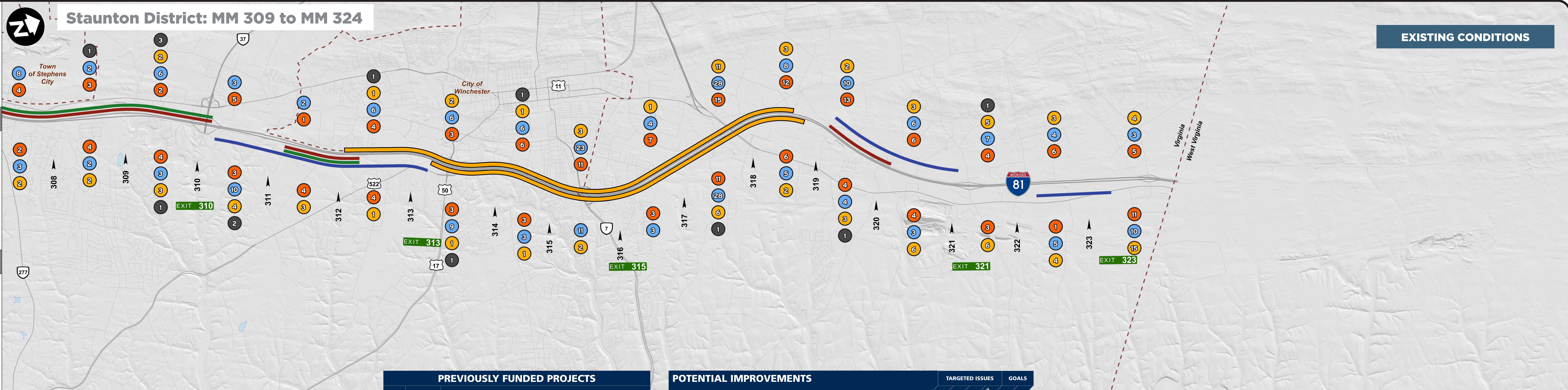
4 comments indicated congestion issues in this segment.

5

5 comments indicated truck operations issues in this segment.

3

3 comments indicated other issues in this segment.



PREVIOUSLY FUNDED PROJECTS		
ID #	UPC #	DESCRIPTION
1	116281	Widen to three lanes between Exit 313 and Exit 317

POTENTIAL IMPROVEMENTS				TARGETED ISSUES				GOALS	
#	LOCATION	DIRECTION	POTENTIAL IMPROVEMENTS	Crash Severity	Crash Frequency	Person-Hours of Delay	Person-Hours of Incident Delay	Improve Safety	Reduce Congestion
				100	100	100	100		
2	Exit 310 to Exit 313	NB	Widen to three lanes	✓	✓	✓		✓	✓
3	Exit 307	SB	Extend deceleration lane	✓	✓			✓	

### LEGEND: Potential Improvements

+1 Widening

Auxiliary Lane

Potential Improvement

Acceleration/Deceleration Extension

Realignment

Previously Funded I-81 Corridor Improvement Program Project

Curve Improvements

Truck Climbing Lane

### Reference

➤ Mile Marker (MM)

